

## Engraving a Trophy Plate

This chapter describes how to engrave a simple Trophy Plate. Left click "File" on the Main Menu Bar, then left click "New".

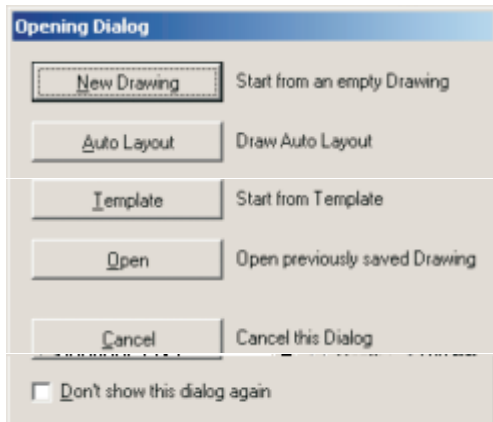


Figure 1

You will now see the Opening Form Dialogue Box (see Figure 1), Left click on "Auto Layout". The Auto Layout screen will be shown (see Figure 2).

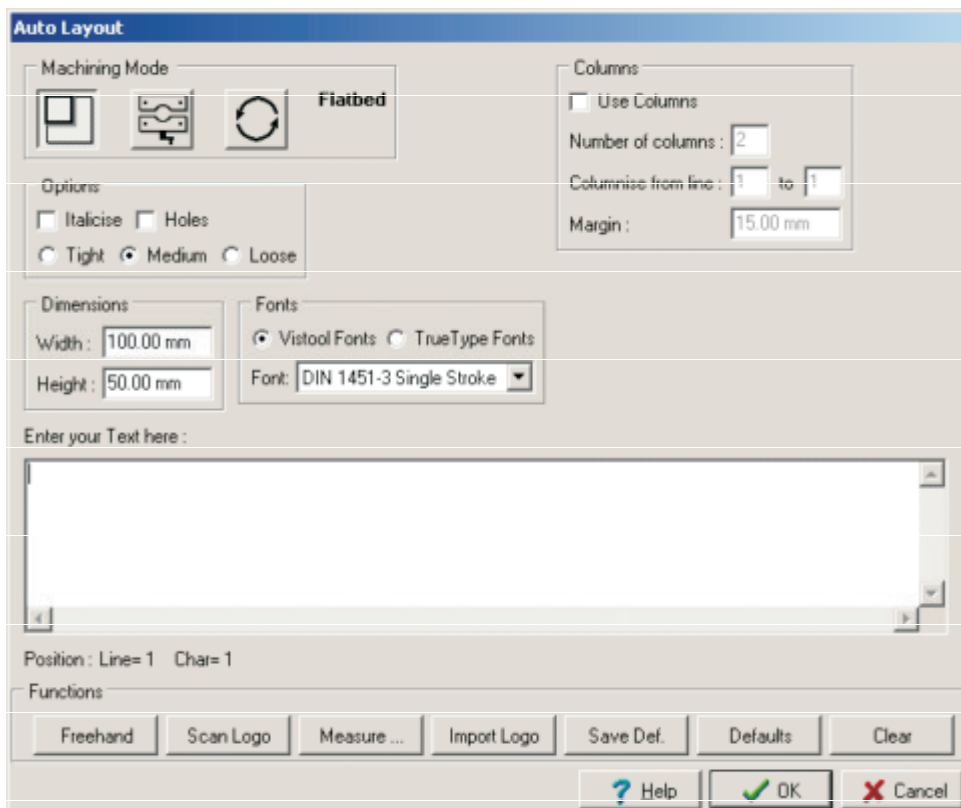


Figure 2

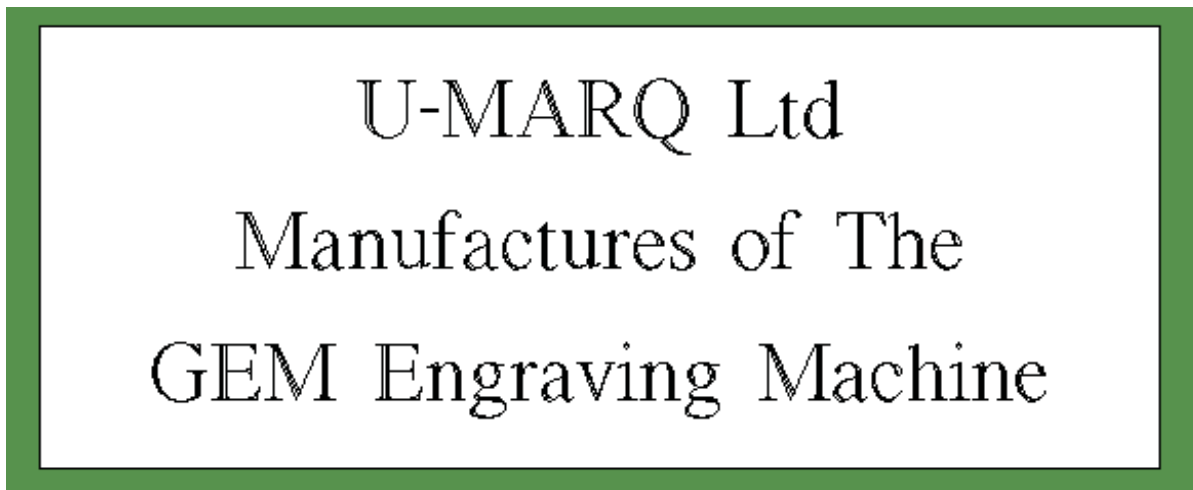
As we are engraving a flat trophy plate held within the centre vice, Left Click on the Centre Vice Icon in the Machine Mode Box, as Figure 2. Enter the dimensions of your plate, in the Dimensions Box .



**Figure 3**

To select the font you wish to use, Left Click On the Fonts Box and scroll through the list until you find the one you wish to use. Left Click on its name (see Figure 3).

Left click in the white space under the Enter your Text here Box and type in your text. Pressing "Enter" at the end of each line. When you are finished left click on "OK" to proceed, you will see your plate ready to be engraved, on screen (see Figure 4).



**Figure 4**

### **Sending the Job to Your Engraving Machine**

Left Click on Production from the Main Menu Bar, then Left Click "Engrave". Or you can use the Engrave icon on the Toolbar.



You will now see a Dialogue Box called Processes, change your Process by Clicking On the arrow and selecting "Diamond Drag", then Click On "OK" (see Figure 5).

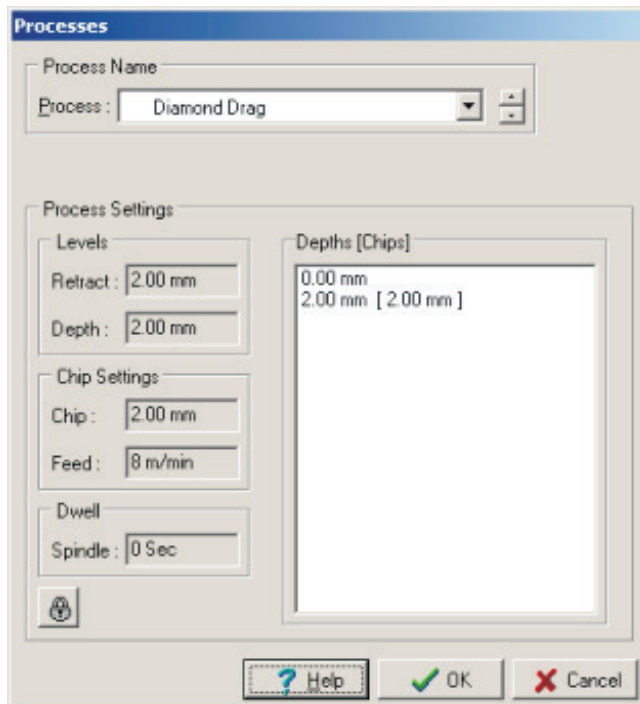


Figure 5

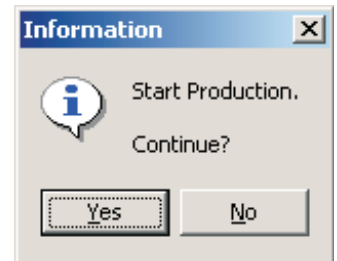


Figure 6

You will now be asked to confirm that you wish to download the job to your Universal-300 Engraving Machine, Click On "Yes" (see Figure 6).

You will now get a Dialogue Box, confirming that the job has been processed by your Universal-300 Engraving Machine and is ready to engrave. Click On "OK".

On your Universal-300 Engraving Machine you will notice that the "Start / Stop" Button is now lit. This indicates that the job has been downloaded to the machine.

### Engraving Your Plate

Remove the protective cover from the trophy plate and place firmly on the flat bed in the top left hand corner. (see Figure 7).



Figure 7

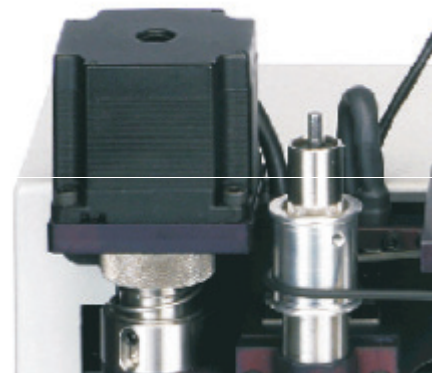


Figure 8

Screw the 'Light touch' anti-clockwise into the top of the spindle shaft. DO NOT OVER-TIGHTEN - hand tight only. (see Figure 8).

Press "Start" on the key pad. The machine head moves to the centre of the trophy plate. Press "Start" again the

## Quick Start Guide

### Chapter 6 Engraving a Trophy Plate

---

machine moves to its first cut position. Lower the spindle shaft using the "Z Down" key until it is between 10 - 20 mm above the surface of the plate. (see Figure 9).

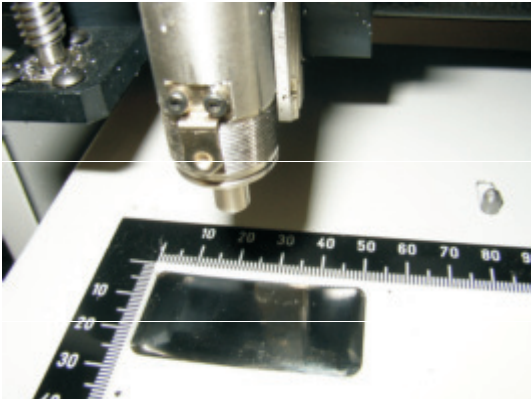


Figure 9



Figure 10

Insert the diamond cutter through the hole in the top of the light touch, until the diamond touches the trophy plate. (see Figure 10).

Gently tighten up grub screw on the light-touch with allen key provided. The press "Start" on the keypad to engrave. When the engraving has finished Press "Home" on the Keypad, the cutter head will move to the top left position.

#### Repeating the Job

To repeat a job on your Universal-300 Engraving Machine, is a simple process. Remove your already engraved item and replace with a new one. Press the "Start / Stop Button", then Press the "Repeat" Button so that the "Start / Stop" is lit by a green light. Press the "Start / Stop" Button, the machine will start to engrave. All parameters will remain exactly the same, as the original job that was sent down.

A useful point to note, is that you can re-engrave over the same item using this function, if doing so do not remove the object form the vice. It is possible for you to Repeat the Job after pressing "Home", however you will need to reset the surface. This is done in exactly the same way as before using the "Z" Down Key on the Keyboard.

#### Producing Only Selected Item

It is possible to engrave only a portions of a job, this is accomplished by Selecting the parts of your job you wish to re-engrave, by Left Clicking On it., Then Left Clicking On "Production" on the Main Menu Bar, then Selecting "Engrave Selected".



Engrave Selected Only icon

Choose your processes as normal and send to the Universal-300 Engraving Machine, as if you where engraving the whole job.

**Note :** If you turn an object blue by, selecting then Left Clicking On the blue square bottom of your screen, it becomes a design object and is not engraved.

**Congratulations! you have completed engraving your first Trophy Plate.**