

## Engraving a Tankard

When setting up a tankard to engrave an image, the area you want to engrave look at it as if it were a piece of paper on the tankard, see Figure 1.



Figure 1

To compose the text and or logo, the easiest way to do it is to use Auto Layout. Left click on text, move cursor to Auto Layout and left click You will now be shown Auto Layout screen.

### How to

- 1 Select the Cylindrical Mode and enter the "Diameter" of your Tankard. This should be the average diameter of the Tankard, of the area you wish to engrave.



Figure 2

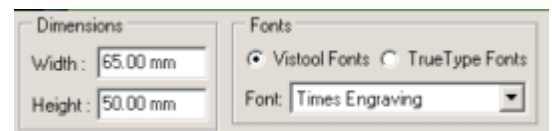


Figure 3

- 2 You can now enter the Dimensions and Font in the boxes, see Figure 3. Select the required font, by Clicking On and scrolling through the list, select by left clicking on the name. Then enter the "Width" and "Height", this is the size of imaginary white piece of paper, see Figure 1.
- 3 Enter your text in text entry box, at the end of each line press "Enter", this will make a new line, see Figure 4. Leave all other entries as they are and Click On "OK".

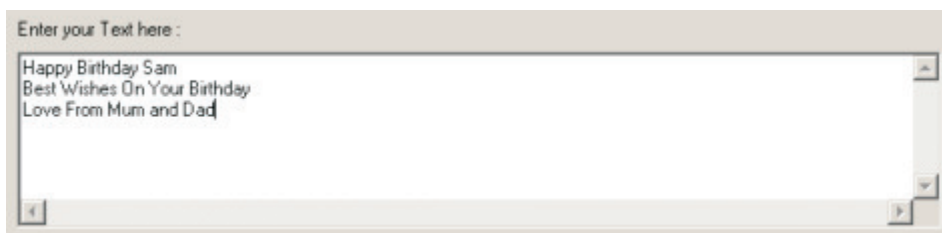


Figure 4

 Zoom Machine icon

- 4 You will now have your engraving area with text in it, on the screen. Click on the Zoom Machine Bed, this will show you the Workspace in relation to the work area, see Figure 5.

## Quick Start Guide

### Chapter 13 Engraving a Tankard

---

- 5 Now is the time to alter your layout, if you are not happy with it. A full description can be found starting on Page 75, this will show you all aspects of layout control.

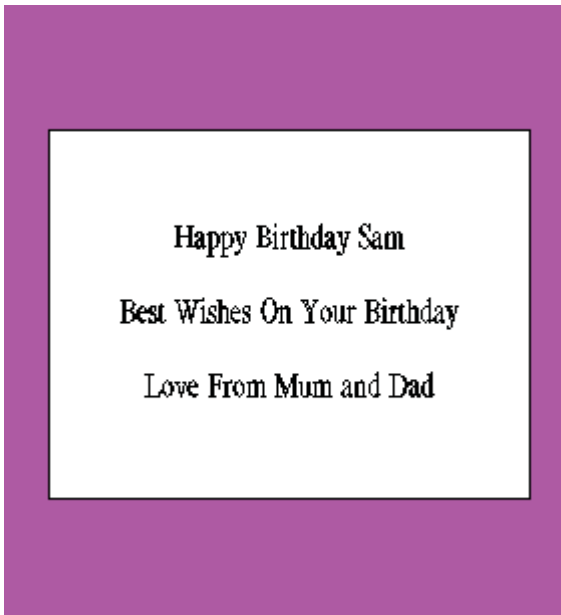


Figure 5

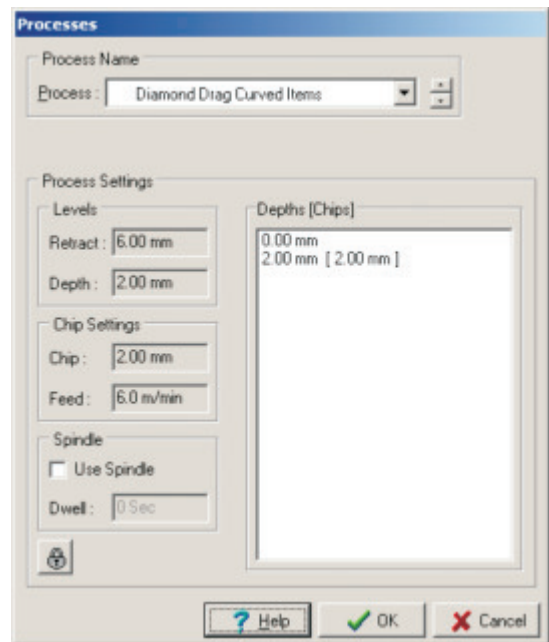


Figure 6

- 6 You are now ready to engrave your Tankard., Left Click On "Production" on the "Main Menu". The select "Engrave", you will now have the Processes Dialogue Box. on the screen, select Diamond Drag Curved Items, see Figure 6. Click On "OK" to send the job to your Universal-300 Engraving Machine. You will then get a Dialogue Box confirming that the job has been downloaded.
- 7 Now put the tankard into the vice system, do this using the relevant cup cone for the size of tankard, attaching it to the drive cone, see Figure 7. You will also need the face plate attached to the free end spigot, see Figure 8.

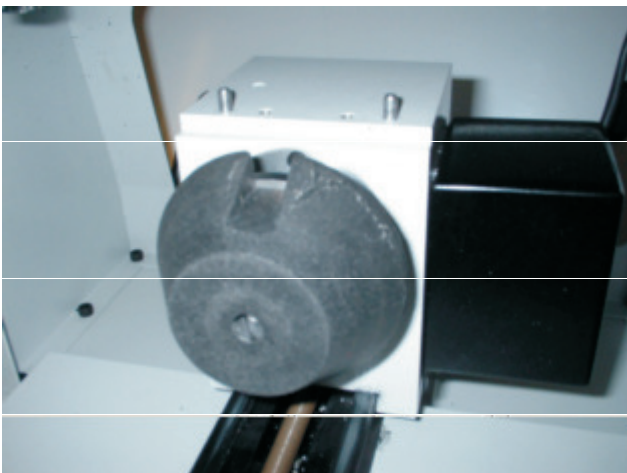


Figure 7



Figure 8

- 8 These should now be in the vice system, as shown in Figure 9.

- 9 Now insert the tankard into the vice as shown in Figure 10. The vice should only be tightened enough so that the tankard does not slip around, when moved. Over tightening, can damage the tankard and in extreme circumstances the machine

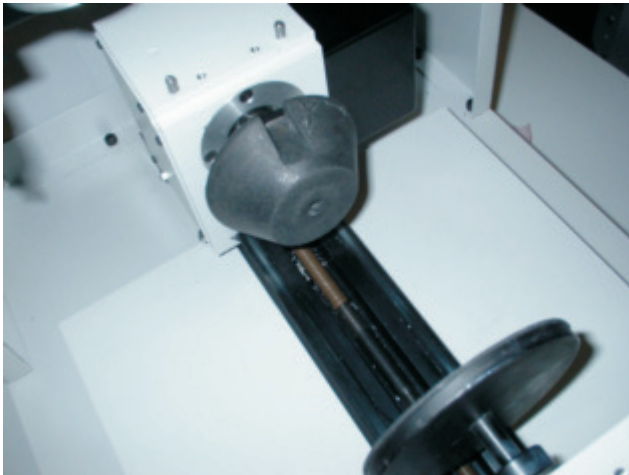


Figure 9

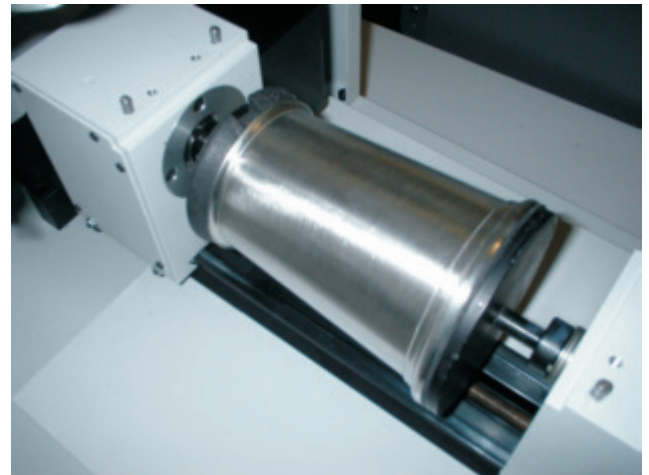


Figure 10

- 10 Screw the "Light Touch" without the Diamond Cutter fitted, anti-clockwise into the top of the spindle shaft. DO NOT OVER-TIGHTEN - hand tight only, see Figure 11.

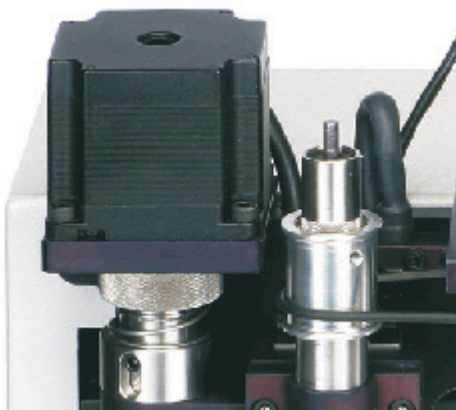


Figure 11

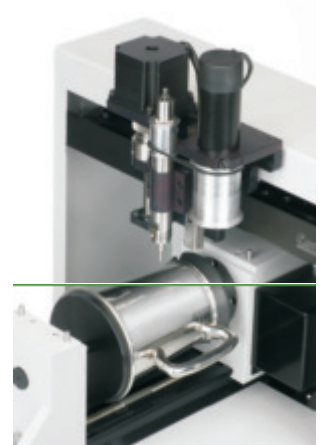


Figure 12

- 11 Press the "Start/Stop" button on the keypad, the machine head will now move to the centre of the engraving area. If the head is not in the middle of the engraving area, move it up with "Y" up or "Y" down keys on the Keyboard until it is positioned in the middle of the engraving area.
- 12 Press the "Stop/Start" button on the Keypad, the machine head will now move to its first cut position. Lower the spindle shaft using the "Z" down key on the Keyboard, until it is between 10 - 20 mm above the surface of the Tankard.. Insert the diamond cutter through the hole in the top of the Light Touch, until the diamond touches the surface of the tankard. Gently tighten up grub screw on the Light Touch with allen key provided.
- 13 Now Press the "Start/Stop" Button on the Keypad, to start your Universal-300 Machine engraving.
- 14 When the machine has finished engraving the machine head will move to the centre of the work space. If you have finished the tankard Press the "Stars/Stop" button on the Keypad. The machine will now Home to the top left corner. Now remove you Tankard.

**Congratulations you have just engraved you first Tankard.**

## Quick Start Guide

### *Chapter 13 Engraving a Tankard*

---

#### **Repeating the Job**

To repeat a job on your Universal-300 Engraving Machine, is a simple process. Remove your already engraved item and replace with a new one. Press the "Start / Stop Button", then Press the "Repeat" Button so that the "Start / Stop" is lit by a green light. Press the "Start / Stop" Button, the machine will start to engrave. All parameters will remain exactly the same, as the original job that was sent down.

A useful point to note, is that you can re-engrave over the same item using this function, if doing so do not remove the object from the vice. It is possible for you to Repeat the Job after pressing "Home", however you will need to reset the surface. This is done in exactly the same way as before using the "Z" Down Key on the Keyboard.

#### **Producing Only Selected Item**

It is possible to engrave only a portions of a job, this is accomplished by Selecting the parts of your job you wish to re-engrave, by Left Clicking On it., Then Left Clicking On "Production" on the Main Menu Bar, then Selecting "Engrave Selected".

Choose your processes as normal and send to the Universal-300 Engraving Machine, as if you where engraving the whole job.

---

**Note :** If you turn an object blue by, selecting then Left Clicking On the blue square bottom of your screen, it becomes a design object and is not engrave.

---