

Engraving Settings

Using the Spindle

When engraving you may wish to have the motor running on the spindle, this can give a different finish or effect. To do this is a very simple operation. After setting the surface. Press "Spindle" (see Figure 1), you will hear and see the spindle turning. Press the "Start / Stop" Button to begin engraving.

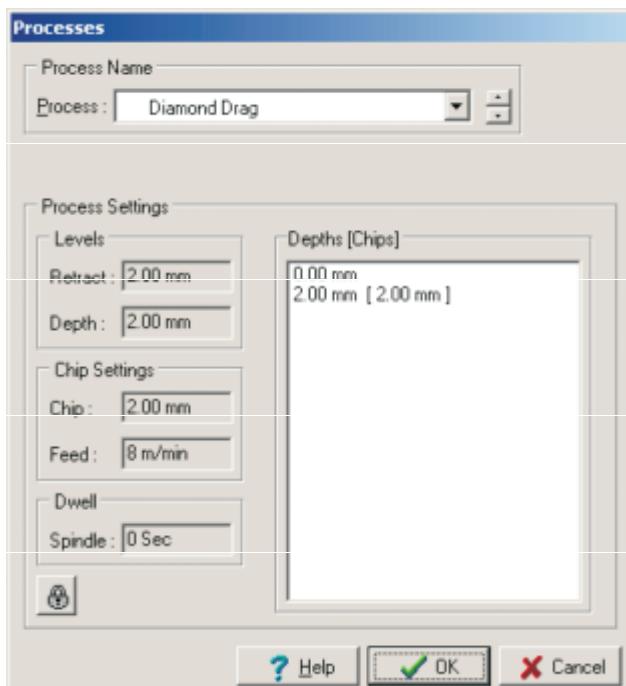


Processes

Within the software it is possible to choose different processes for engraving. Following are brief explanations of these Processes and their uses.

Diamond Drag

Principally used on jewellers brass, trophy aluminium, silver, and gold..

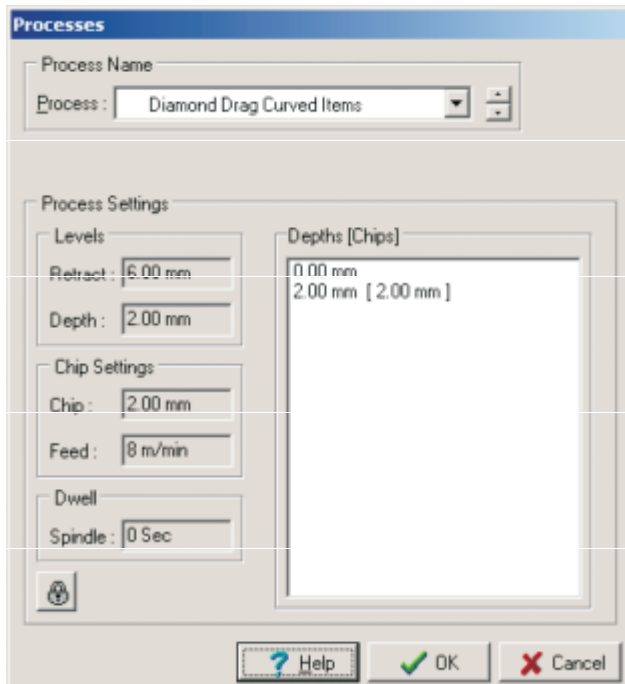


Quick Start Guide

Chapter 22 Engraving Settings

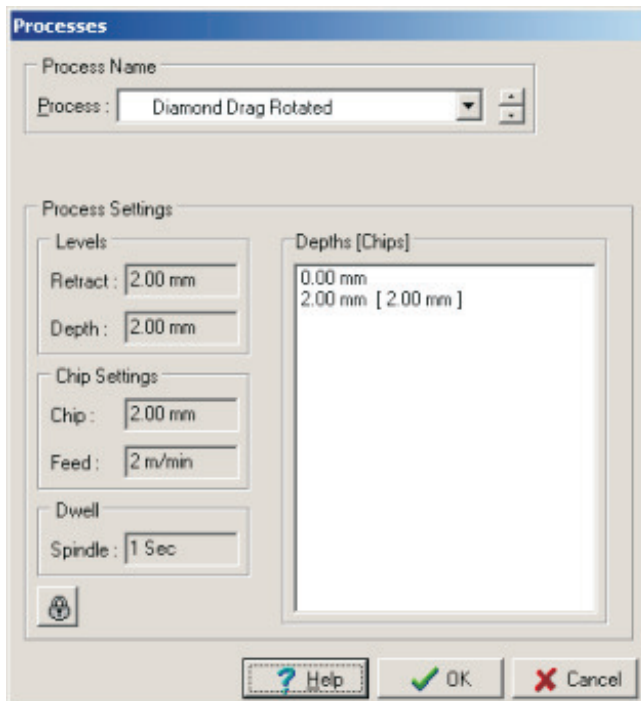
Diamond Drag Curved Items

Principally used on jewellers brass, trophy aluminium, silver, and gold. It is necessary to use this when the object being engraving has a curved surface, eg. Hip flasks.



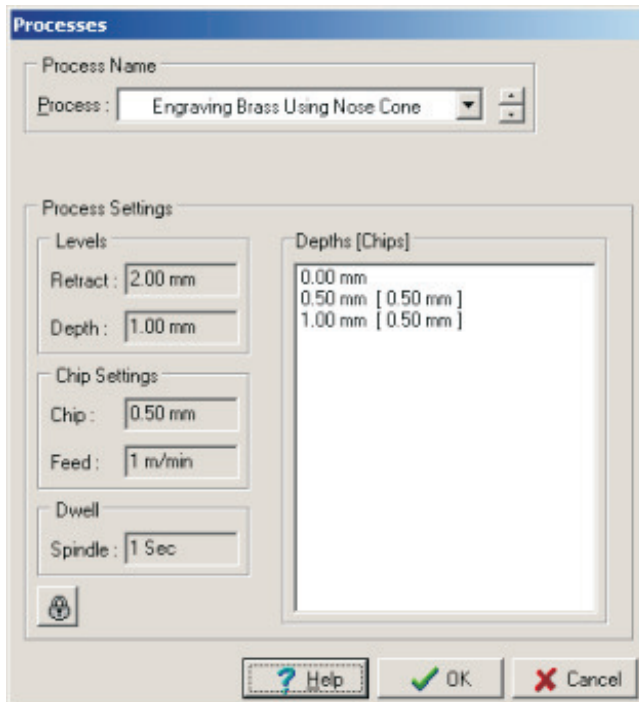
Diamond Drag Rotated

Principally used on jewellers brass, trophy aluminium, silver, gold, and glass.



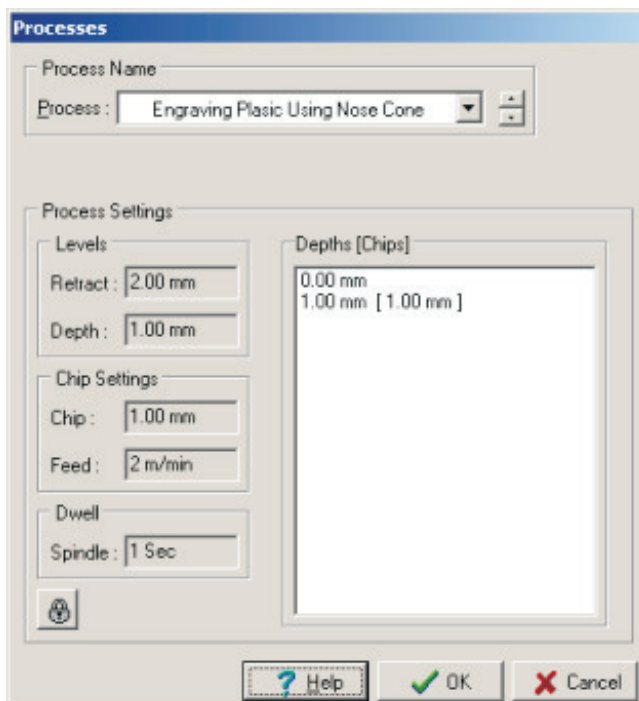
Engraving Brass with Nose Cone

Used on brass and aluminium. To be used in conjunction with nose cone and carbide cutters.



Engraving Plastic with Nose Cone

Used on plastics and laminates. To be used in conjunction with nose cone and carbide cutters.



Note : In some of the Processes there is a Dwell. This delays the "Z" axis going down into the material until the Spindle Motor has reach full speed.