

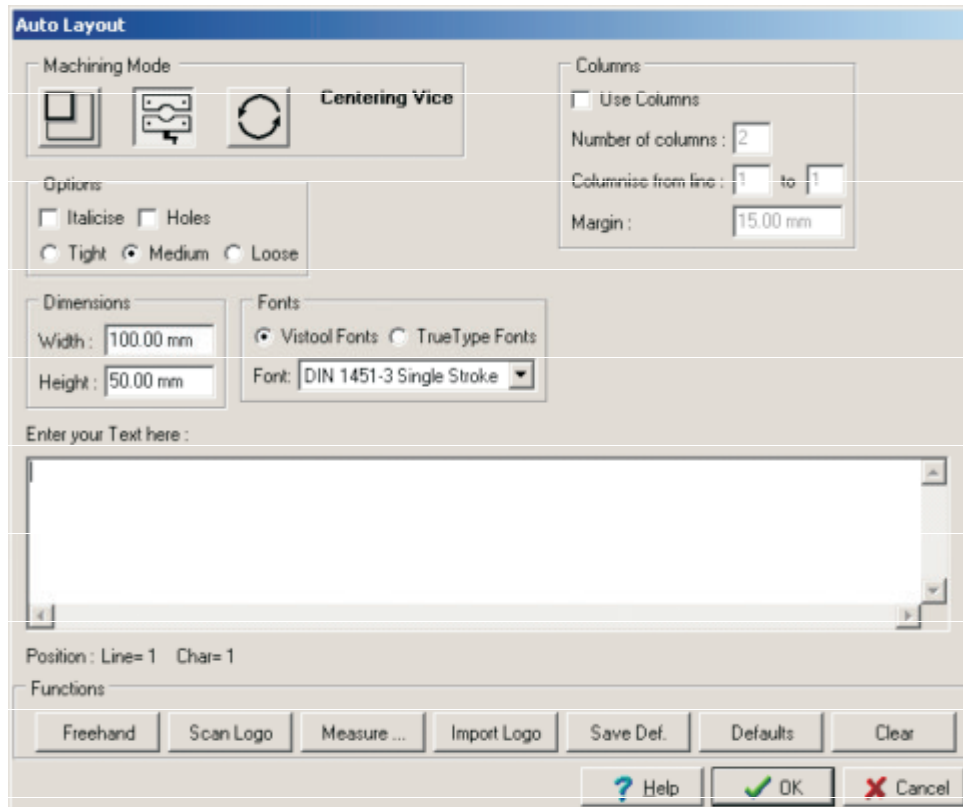
Engraving a Pen

To engrave a pen, Left click on Text, move cursor to Auto Layout, or select the Auto Layout icon on the Toolbar.



Auto Layout icon

The Auto Layout Dialogue Box will appear, select the Centre Vice Option if it is not already selected.



Centre Vice Icon

Select your Font, Enter your Text, maximum Workspace height should be 5mm and Width should be the maximum width of the available engraving area on the pen. All other parameters should be exactly as for any other flat item..

Note : Engraving a pen using the centre vice, will restrict you to one line of text with a probable maximum height of 3mm. To engrave multi lines of text, you will have to use the Universal-300 Engraving Machine cylindrical function.

You should now have a drawing similar to Figure 1.



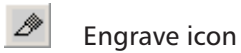
Figure 1

If you are satisfied with the layout of the pen, we can now proceed to send the job to the Universal-300 Engraving Machine. If however you are unhappy with the layout, and would like to change any aspect, see Page for more information.

Quick Start Guide

Chapter 12 Engraving a Pen

To send the job to the Universal-300 Engraving Machine, Click On "Production" then Click On "Engrave".



Engrave icon

You will now have the now familiar Processes Dialogue Box, see Figure 2. Change by Clicking On then selecting "Diamond Drag Curved Items", the Click On "OK".

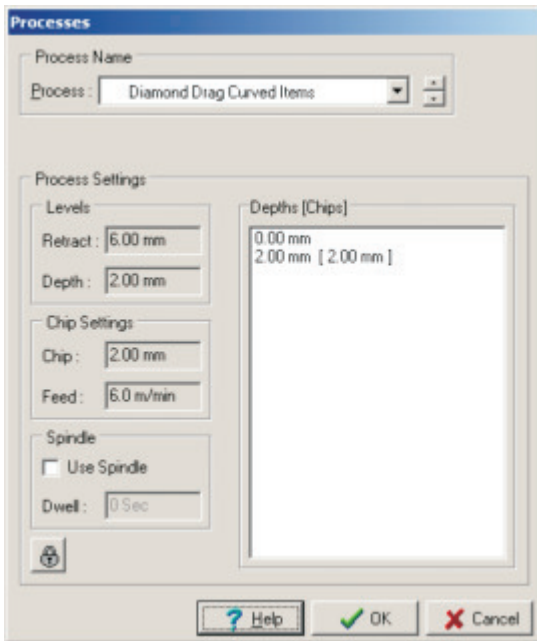


Figure 2

You will now be asked to confirm that you wish to send the job to your Universal-300 Engraving Machine, Click On "OK". You will now have a screen that confirms the job has been sent to your Universal-300 Engraving Machine, Click On "OK".

Now put your pen jigs onto your Universal-300 machine as shown, and place your pen into the jaws, see Figure 3.

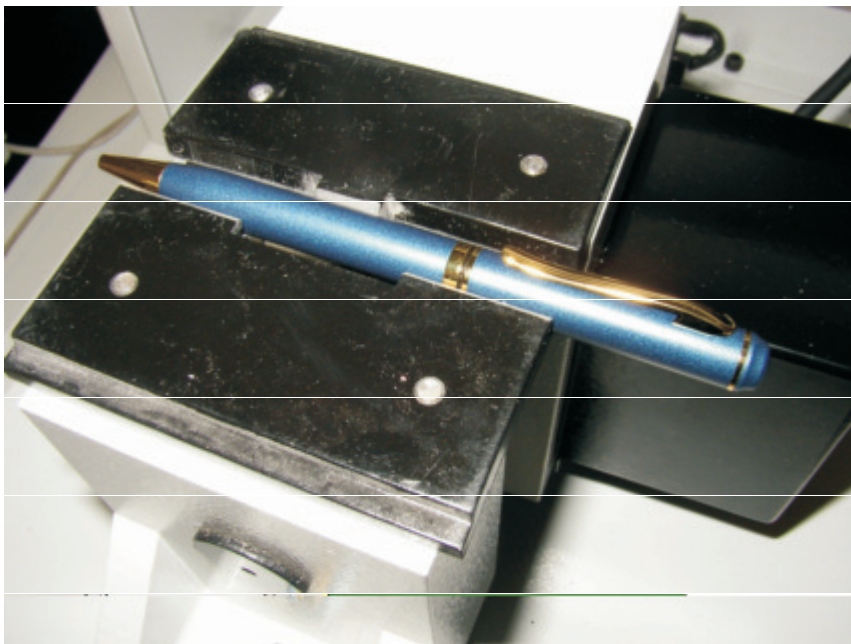


Figure 3

Screw the Light Touch without the diamond fitted, anti-clockwise into the top of the spindle shaft. DO NOT OVER-TIGHTEN - hand tight only, see Figure 4.

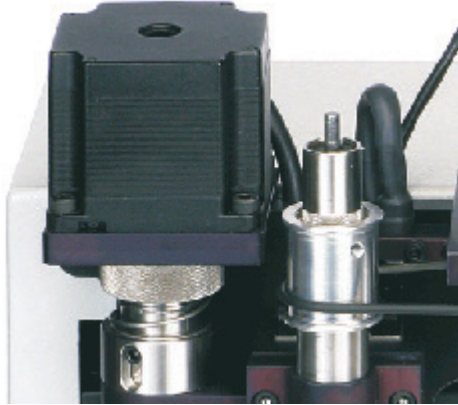


Figure 4

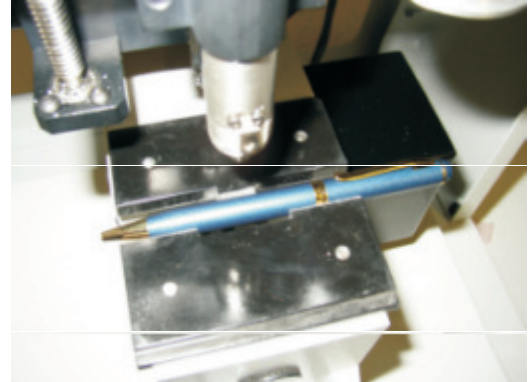


Figure 5

Press the "Start/Stop" Button on the Keypad. The machine head moves to the centre of the engraving area of the pen, if it is not move the pen to the left or right to align correctly, see Figure 5.

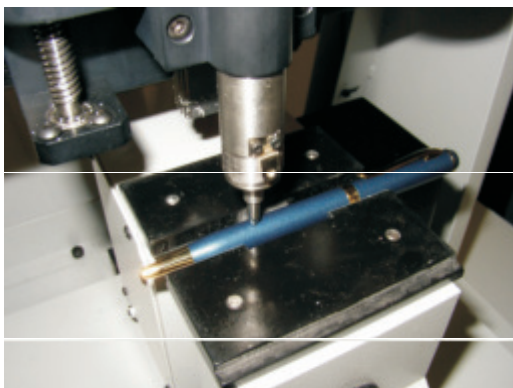


Figure 6

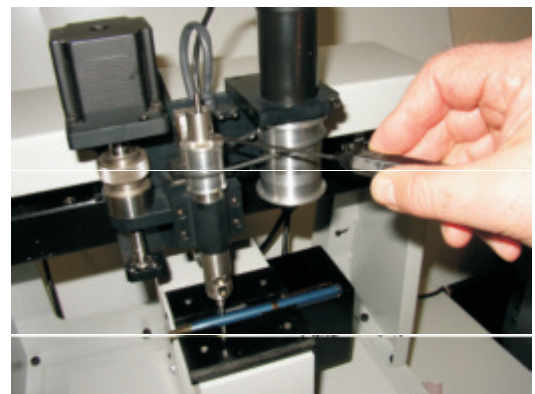


Figure 7

Then Press the "Start/Stop" Button again the machine moves to its first cut position, surface. Lower the spindle shaft using the "Z Down" Button until it is between 10 - 20 mm above the surface of the pen, see Figure 6. Insert the diamond cutter through the hole in the top of the Light Touch until the diamond touches the pen, see Figure 7. Gently tighten up grub screw on the Light Touch with allen key provided. Press the "Start/Stop" Button on the Keypad, the Universal-300 Engraving Machine will now start engraving your pen.

When the pen has finished being engraved, the cutter will return to the centre position. Now inspect the engraving without removing the pen, to make sure it has been engraved correctly. If the engraving is not deep enough you can go over it again by following the Repeat Job procedure.

Repeating the Job

To repeat a job on your Universal-300 Engraving Machine, is a simple process. Remove your already engraved item and replace with a new one. Press the "Start / Stop Button", then Press the "Repeat" Button so that the "Start / Stop" is lit by a green light. Press the "Start / Stop" Button, the machine will start to engrave. All parameters will remain exactly the same, as the original job that was sent down.

A useful point to note, is that you can re-engage over the same item using this function, if doing so do not remove the object form the vice. It is possible for you to Repeat the Job after pressing "Home", however you will need to reset the surface. This is done in exactly the same way as before using the "Z" Down Key on the Keyboard.

Producing Only Selected Item

Quick Start Guide

Chapter 12 Engraving a Pen

It is possible to engrave only a portions of a job, this is accomplished by Selecting the parts of your job you wish to re-engage, by Left Clicking On it., Then Left Clicking On "Production" on the Main Menu Bar, then Selecting "Engrave Selected".



Engrave Selected Only icon

Choose your processes as normal and send to the Universal-300 Engraving Machine, as if you where engraving the whole job.

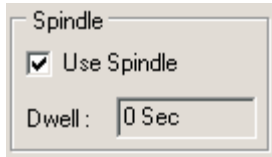


Figure 8

Congratulations.! You have now completed Engraving A Pen.

Note : On certain types of objects i.e. Pens, Watches, Clocks etc., that have had a coating applied to them, you may get better results if you Rotate the Diamond. This can be achieved by checking the "Use Spindle" check box when assigning the Process to the job, see Figure 8.
