

Measuring a Plate Using the Universal Engraving Machine

You can use your Universal Engraving Machine to measure the Size of a Plate or the Engraving Area without using rulers or other mechanical measuring devices.

Please ensure that you have placed the cutter that you are intending to use during this job, in the Universal Engraving Machine Spindle.

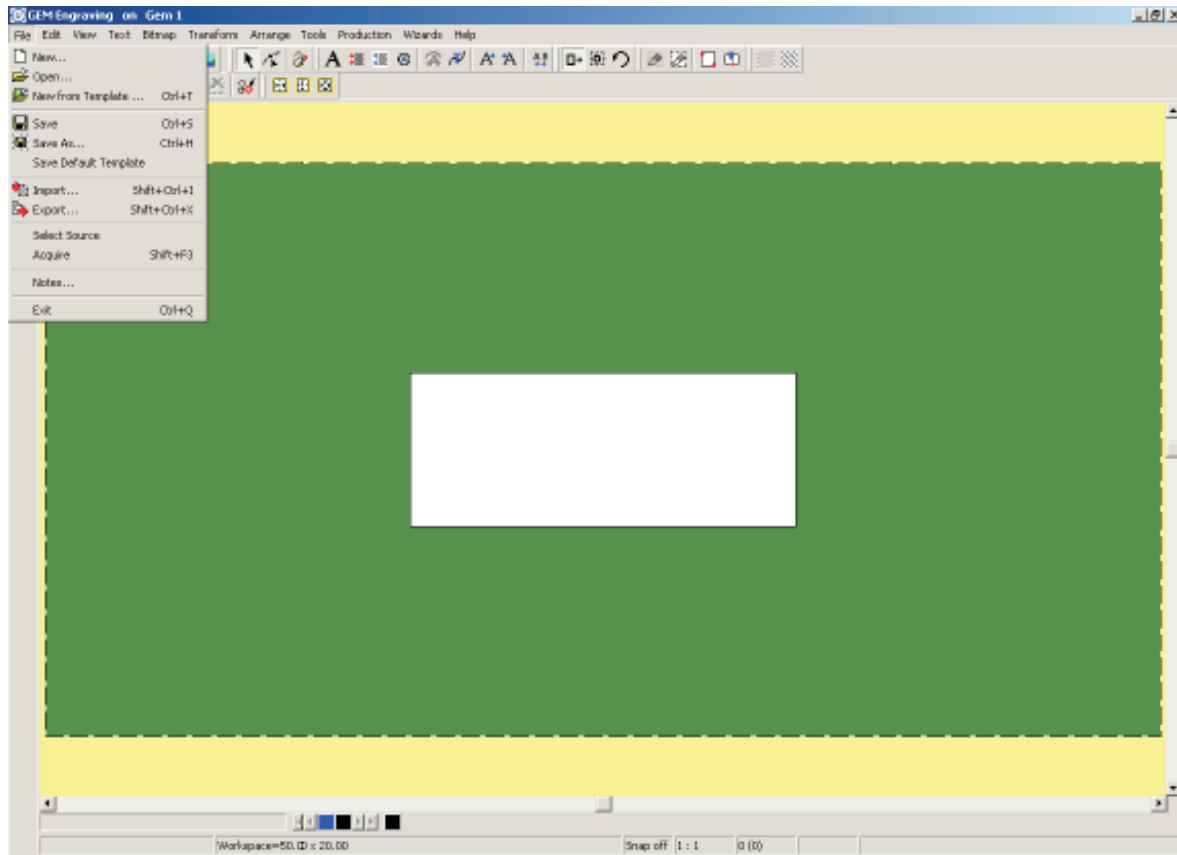


Figure 1

Left Click On "File", then Click On "New", see Figure 1. You will see the Opening Form Dialogue Box, Left Click On "Auto Layout", see Figure 2.

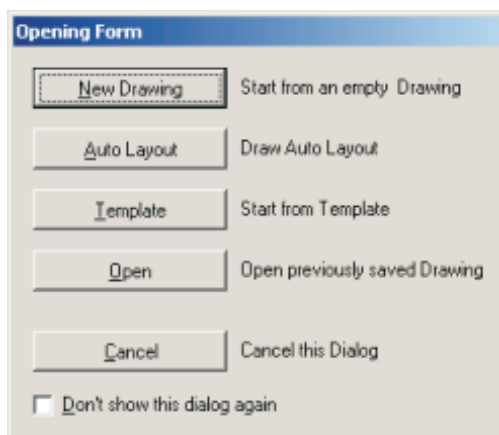


Figure 2

Quick Start Guide

Chapter 21 Automatically Measuring a Plate

The Auto Layout Dialogue Box will be shown, as we are doing a Flat Plate held within the centre vice. Left Click On the "Centre Vice" icon.



Centre Vice icon

To measure the size of your flat plate and its position Left Click On "Measure", at this stage you do not have to enter any text. You will now be prompted to move the Universal Engraving Machine to one corner of the plate, see Figure 3. Press the "Start / Stop" on the Universal Engraving Machine Keypad and ensure that it is lit. Move the Universal Engraving Machine to your engraving area, top left corner, using the Universal-300 Keypad "X" "Y" direction Keys. The engraving head should now be positioned over the corner position of the engraving area. Refer back to your computer and Left Click On "Yes" see Figure 3.

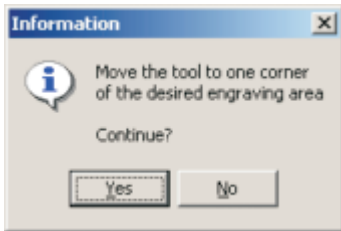


Figure 3

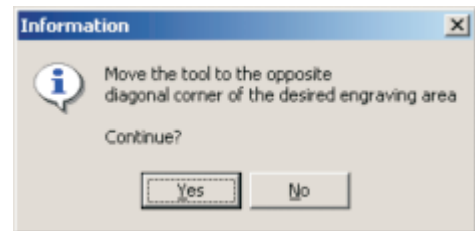


Figure 4

You will now be prompted to move the Universal Engraving Machine, to the diagonal corner of the engraving area see Figure 4. Using the Universal Engraving Machines "X" "Y" Direction Keys, again move the Machines Engraving Head to the bottom right corner of the engraving area. The Universal Engraving Machines Engraving Head, should now be positioned over the bottom right corner of the engraving area. Refer back to your computer and Left Click On "Yes" in the Dialogue Box shown in Figure 4.

You will see in the Auto Layout Dialogue Box, the size has changed, this reflects now the size you have measured using the Universal Engraving Machine. You can now enter your desired text, then Click On "OK" see Figure 5.

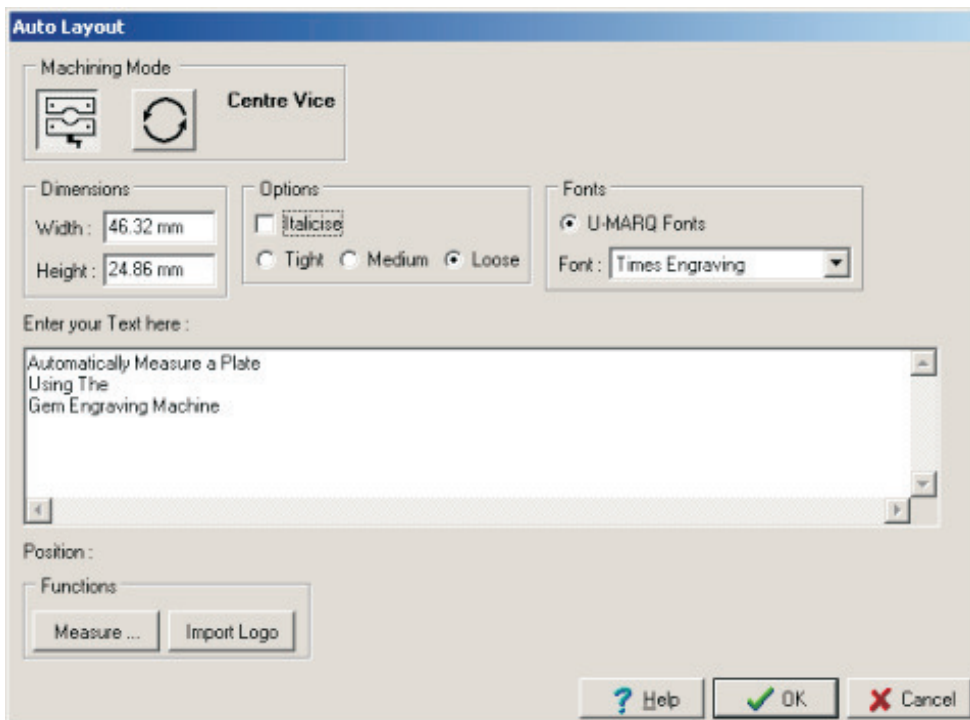


Figure 5

Your Plate is now shown on the screen, see Figure 6.

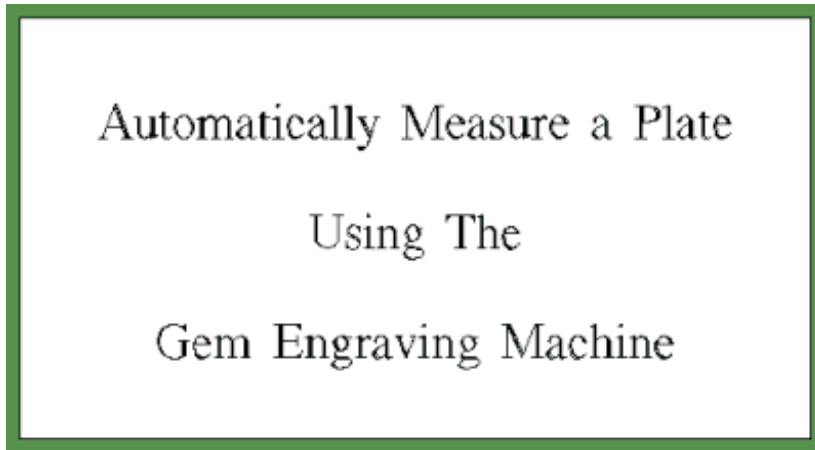


Figure 6

You can now proceed to engrave your object as normal, refer to the relevant section of this manual for the type of material you are engraving.