

## Engraving Glass

When engraving glass, there is no hard and fast rule to achieve the right results. Different cutters give different effects on different types of glass. If you are just engraving a few glasses, the standard 120° Diamond will probably suffice, but if you regularly engrave large amount of glass, a Composite Diamond may be required.. It is necessary to use some kind of lubrication when engraving glass, this traps the glass dust created and decreases any chipping that would normally occur. A good lubricant for small amounts of glass is a silicone type of spray, for large production runs water is ideal. Please contact you local Dealer for more information on glass lubricants.

- 1 To engrave a glass, setup a job similar to the one described in "Engraving a Tankard", up to step 6 see Page 58.

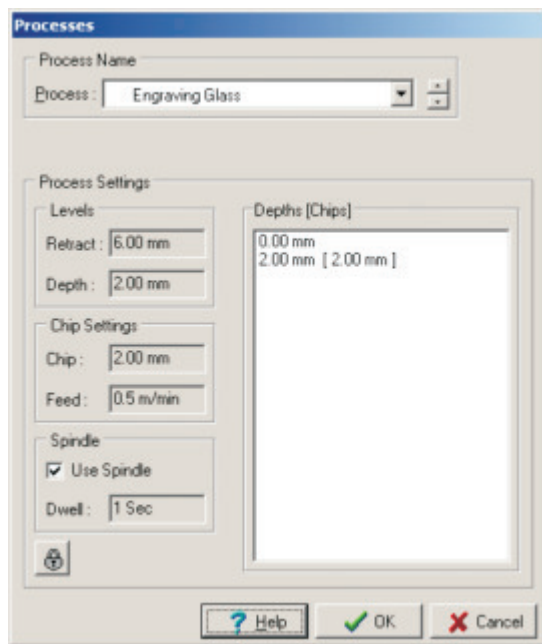


Figure 1



Figure 2

- 2 Before you send the job to your Universal-300 Engraving machine, it is necessary to select the correct Process, select "Engraving Glass". This will set all the Machining Parameters that are required to engrave glass correctly, including automatically starting the spindle, see Figure 1.
- 3 Now proceed as in "Engraving a Tankard", from step 7 see Page 58.

**Congratulations you should now have engraved your first glass.**

---

**Note :** It is necessary to use some kind of lubrication when engraving glass, this traps the glass dust created which can be harmful if inhaled.

---

### Repeating the Job

To repeat a job on your Universal-300 Engraving Machine, is a simple process. Remove your already engraved item and replace with a new one. Press the "Start / Stop Button", then Press the "Repeat" Button so that the "Start / Stop" is lit by a green light. Press the "Start / Stop" Button, the machine will start to engrave. All parameters will remain exactly the same, as the original job that was sent down.

A useful point to note, is that you can re-engage over the same item using this function, if doing so do not remove the object form the vice. It is possible for you to Repeat the Job after pressing "Home", however you will need to reset the surface. This is done in exactly the same way as before using the "Z" Down Key on the Keyboard.

### Producing Only Selected Item

It is possible to engrave only a portions of a job, this is accomplished by Selecting the parts of your job you wish to re-engage, by Left Clicking On it., Then Left Clicking On "Production" on the Main Menu Bar, then Selecting "Engrave Selected".

## Quick Start Guide

### *Chapter 14 Engraving Glass*

---

Choose your processes as normal and send to the Universal-300 Engraving Machine, as if you were engraving the whole job.

---

**Note :** If you turn an object blue by selecting then Left Clicking On the blue square bottom of your screen, it becomes a design object and is not engraved.

---