

## Engraving Using Disk Text

Disc Text is used as its name implies to engrave items like Dog Tags, Watch Backs, Medals etc.

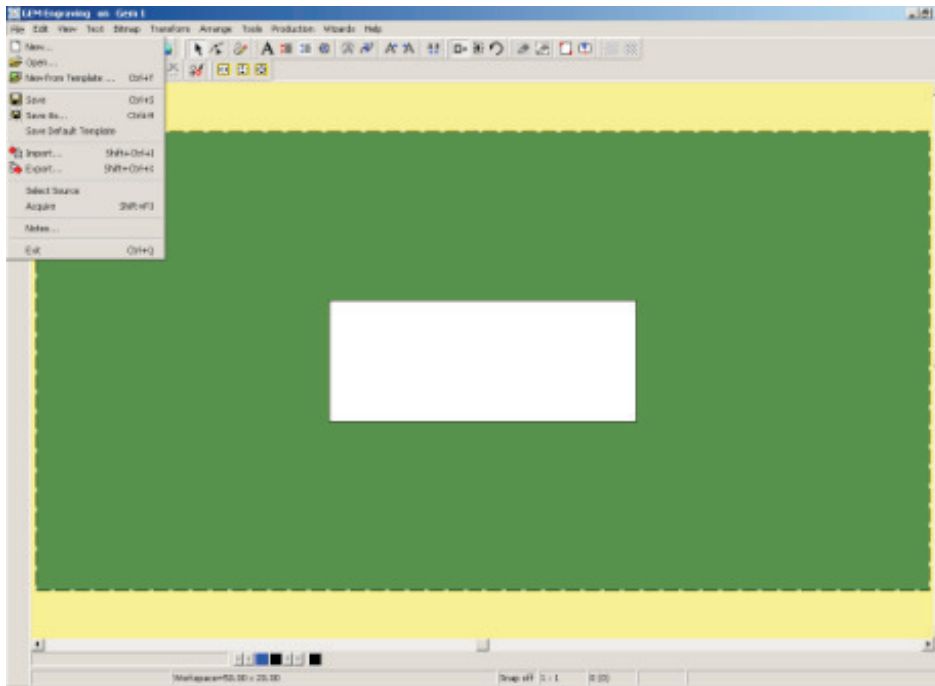


Figure 1

Left Click On "File", then Click On "New", see Figure 1.

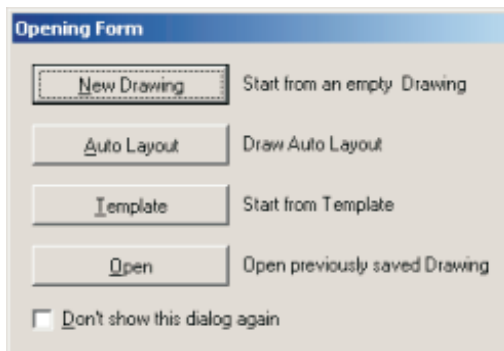


Figure 2

You will see the "Opening Form" Dialogue Box, Left Click On "New Drawing", see Figure 2.



Centre Vice Icon

Left Click On the "Centre Vice", then Click On "OK". Main Menu Bar Left Click On "Text", then select "Disc Text", see Figure 3.

# Quick Start Guide

## Chapter 10 Disc Text

---

You will now see the "Disc Text" Dialogue Box. Enter your text in the Text Box provided, see Figure 4.

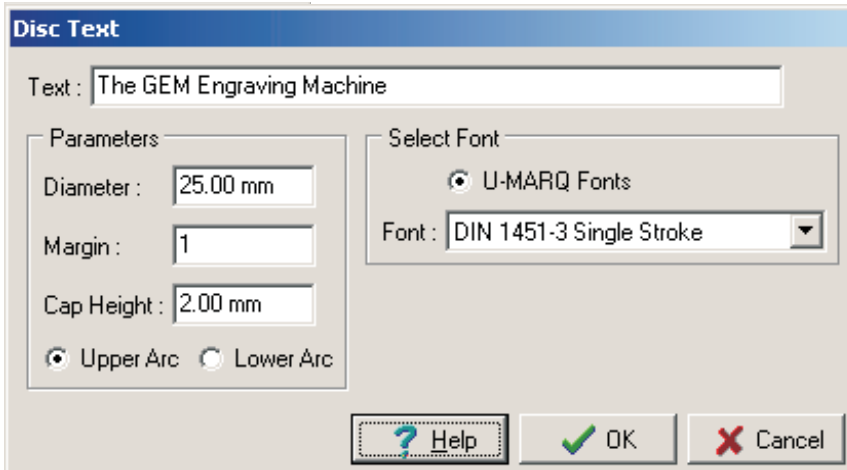


Figure 4

It is possible to change the Parameters for your Disc. Left Click On the relevant portion and enter the new data, see Figure 5.

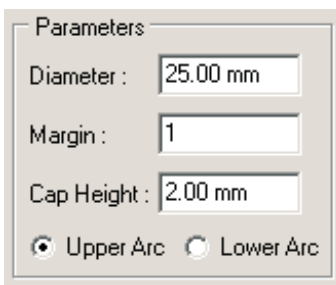


Figure 5

### Diameter

Enter the diameter of your disc.

### Margin

Enter any margin required between the text and edge of disc.

### Cap Height

Enter the text height.

### Arc

Choose whether you want to enter an Upper Arc or Lower Arc, by Checking the appropriate Box.

It is also possible to change your font style Left Click On the arrow and select your desired font. When satisfied with your set-up Click On "OK", see Figure 6.

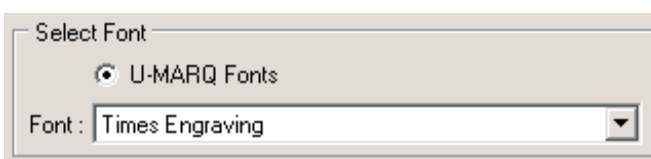


Figure 6

Your Disc Text layout will now be on the screen. The job in Figure 7 has been setup using the Upper Arc setting. The job in Figure 8 has been setup using the Upper Arc setting.



Figure 7



Figure 8

From the Main Menu Bar Left Click On "Production", then Click On "Engrave".

From the Processes Dialogue Box, choose the process relevant to the material being engraved. In this example select "Diamond Drag", then Left Click On "OK".

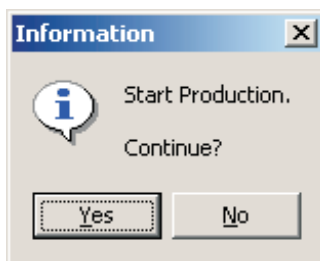


Figure 9

You now are asked if you wish to send your job to the Engraving Machine, Click On "Yes", see Figure 9.

You are now informed that the jobs has been processed by the Engraving Machine and is ready to engrave. Click On "OK".

# Quick Start Guide

## Chapter 10 Disc Text

---

On your Universal-300 Engraving Machine, you will now notice that the "Start / Stop" Button is lit. This indicates



Figure 10

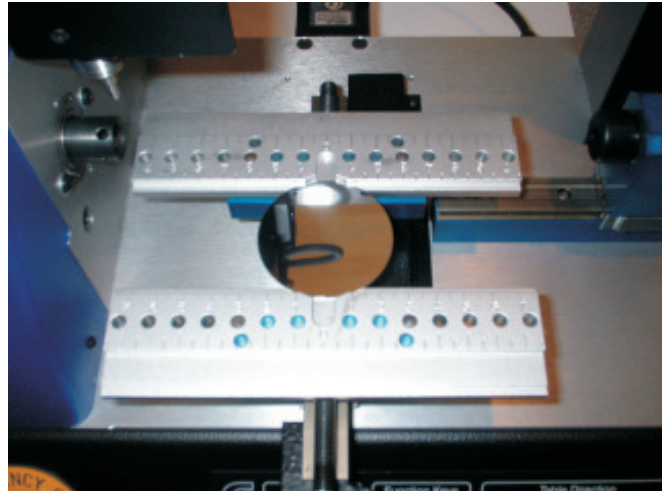


Figure 11

that the job has been downloaded to the machine.

Screw the 'Light-touch' anti-clockwise into the top of the spindle shaft. **DO NOT OVER-TIGHTEN - hand tight only**, see Figure 10.

Attach the Jigs to the Centre Vice Jaws on your Universal-300 Engraving Machine. Then place your Disc central in the Jig, see Figure 11.

Press "Start / Stop" on the keypad. The Universal-300 Engraving Machine will start to engrave. When the engraving has finished press "Home" on the Keypad.

**Congratulations you have completed your first engraving using Disc Text.**

### Repeating the Job

To repeat a job on your Universal-300 Engraving Machine, is a simple process. Remove your already engraved item and replace with a new one. Press the "Start / Stop Button", then Press the "Repeat" Button so that the "Start / Stop" is lit by a green light. Press the "Start / Stop" Button, the machine will start to engrave. All parameters will remain exactly the same, as the original job that was sent down.

A useful point to note, is that you can re-engrave over the same item using this function, if doing so do not remove the object form the vice. It is possible for you to Repeat the Job after pressing "Home", however you will need to reset the surface. This is done in exactly the same way as before using the "Z" Down Key on the Keyboard.

### Producing Only Selected Item

It is possible to engrave only a portions of a job, this is accomplished by Selecting the parts of your job you wish to re-engrave, by Left Clicking On it., Then Left Clicking On "Production" on the Main Menu Bar, then Selecting "Engrave Selected".



Engrave Selected Only icon

Choose your processes as normal and send to the Universal-300 Engraving Machine, as if you were engraving the whole job.

---

**Note :** If you turn an object blue by, selecting then Left Clicking On the blue square bottom of your screen, it becomes a design object and is not engraved.

---