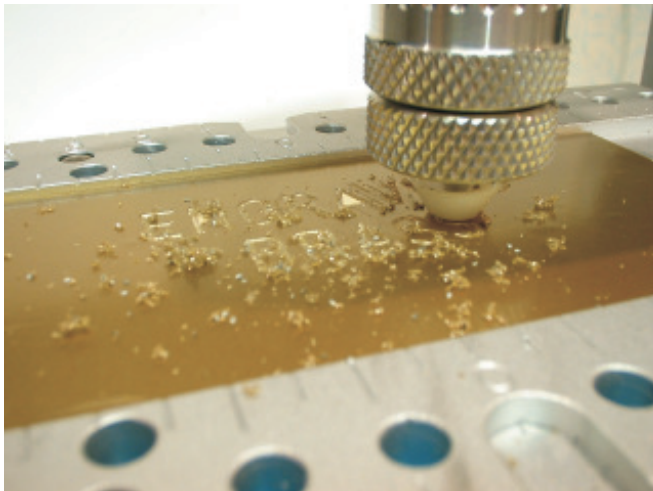


Engraving a Brass Plate

Engraving a Brass Plate can be achieved using the same method as Engraving a Laminated Plastic Plate, see Page 33.



Engraving Brass Using a Nose Cone

To protect the surface of the brass from scratching, apply a vinyl material onto the face of the brass. Scratches are caused by two things, swarf trapped under the nose cone, or a nose cone that is damaged.

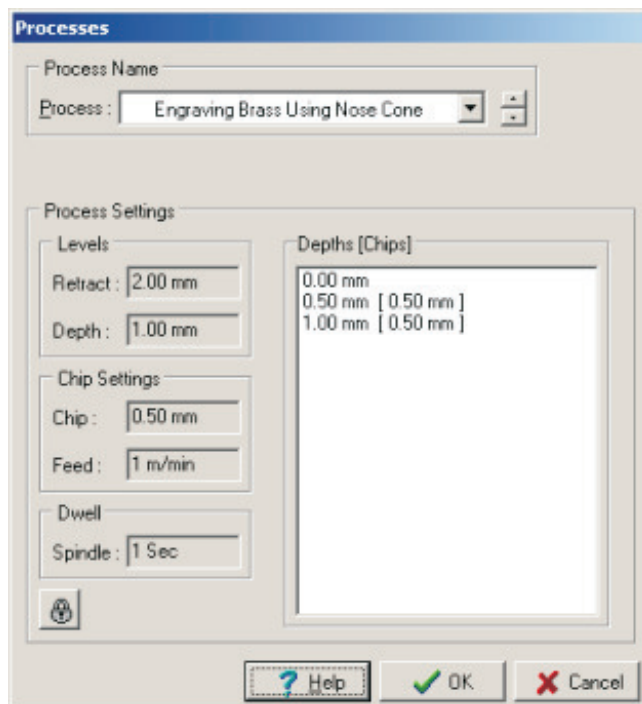


Figure 1

The process you are required to choose is Engraving Brass Using Nose Cone, see Figure 1. This will engrave in two passes over the material surface, to achieve a good finish.

Repeating the Job

To repeat a job on your Engraving Machine, is a simple process. Remove your already engraved item and replace with a new one. Press the "Start / Stop Button", then Press the "Repeat" Button so that the "Start / Stop" is lit by a green

Quick Start Guide

Chapter 8 Engraving a Brass Plate

light. Press the "Start / Stop" Button, the machine will start to engrave. All parameters will remain exactly the same, as the original job that was sent down.

A useful point to note, is that you can re-engage over the same item using this function, if doing so do not remove the object from the vice. It is possible for you to Repeat the Job after pressing "Home", however you will need to reset the surface. This is done in exactly the same way as before using the "Z" Down Key on the Keyboard.

Producing Only Selected Item

It is possible to engrave only a portions of a job, this is accomplished by Selecting the parts of your job you wish to re-engage, by Left Clicking On it., Then Left Clicking On "Production" on the Main Menu Bar, then Selecting "Engrave Selected".



Engrave Selected Only icon

Choose your processes as normal and send to the Engraving Machine, as if you were engraving the whole job.

Note : If you turn an object blue by, selecting then Left Clicking On the blue square bottom of your screen, it becomes a design object and is not engraved.
