

Engraving a Tankard with the GEM-VX4

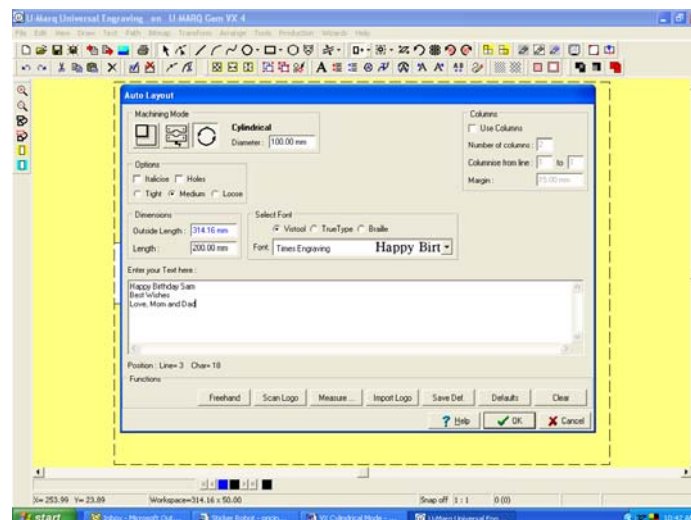
When Setting up a tankard to engrave an image, imagine that the area you want to engrave is a piece of paper. See below



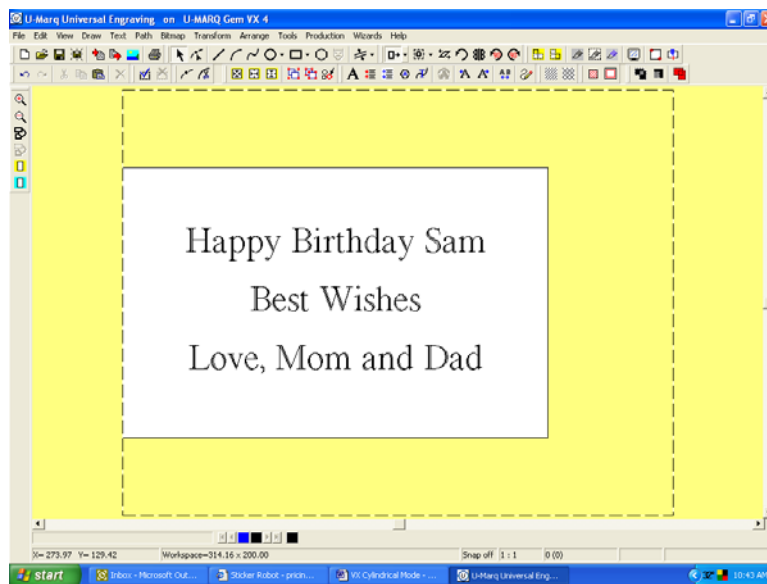
To compose the text and/or logo, the easiest way to do so is to use the Auto Layout. Left click on text, move the cursor to Auto Layout and left click, you will now be shown Auto Layout screen.

How To

1. Select the Cylindrical Mode and enter the “Diameter” of your tankard. This should be the average diameter of the tankard, of the area you wish to engrave.

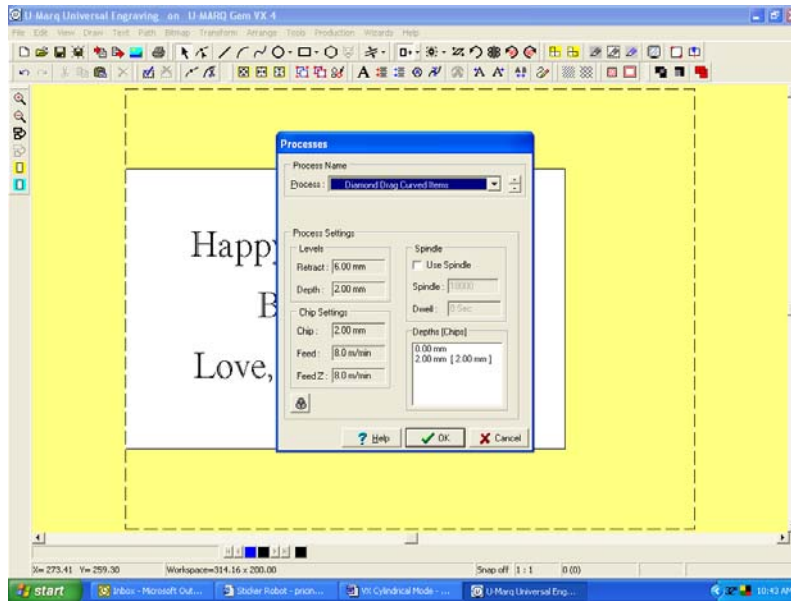


2. You can now enter the dimensions of your engraving area 'Length' (do NOT adjust the 'Outside Length' this will be automatically adjusted by the software). The length simply means the size of your workspace. It might be easiest if you manually measure your engraving area using your machine.
3. Enter your text in the text entry box. After your text is complete press ok at the bottom of your box.
4. You will now have your engraving area with text in it, on the screen.

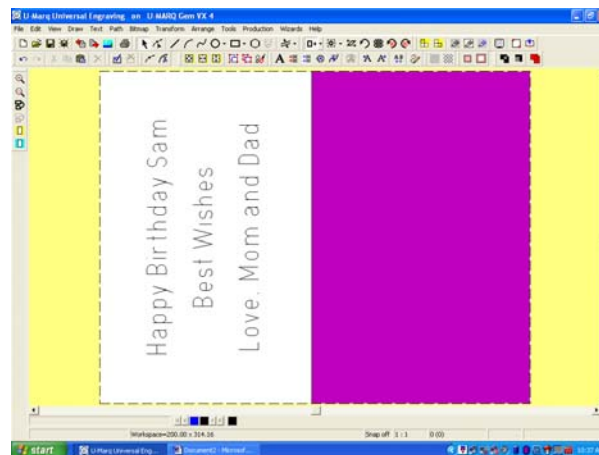


5. Now is the time to alter your layout if you are not happy with it. After the alterations you are ready to engrave.

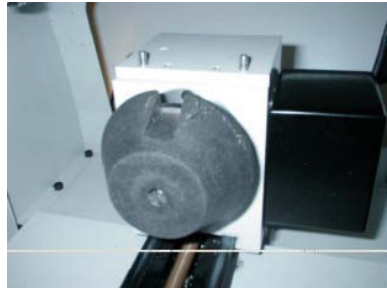
6. Choose the appropriate engraving method found in your production box.



7. Now you will send the engraving to your machine. Before doing this the software will ask to automatically switch your engraving to the appropriate direction so you may see what it is going to look like before you engrave, click 'ok'.



8. You are now ready to engrave your tankard. Place your Tankard in your engraving machine using the appropriate cup cone size. You will also need to use your faceplate to attach to the bottom of your tankard.



Cup Cone



Faceplate



How it should look in the Vice.

9. Now insert the tankard into the vice as shown below. The vice should only be tightened enough so that the tankard does not slip around when moved. Do NOT over tighten!



10. Press the 'start/stop' button on your machine, set your position, push 'start' and then set your surface area push 'start/stop' one last time and the machine will begin to engrave!
11. Congratulations you have just engraved your first tankard!