

Engraving a Trophy Plate

This chapter describes how to engrave a simple Trophy Plate.

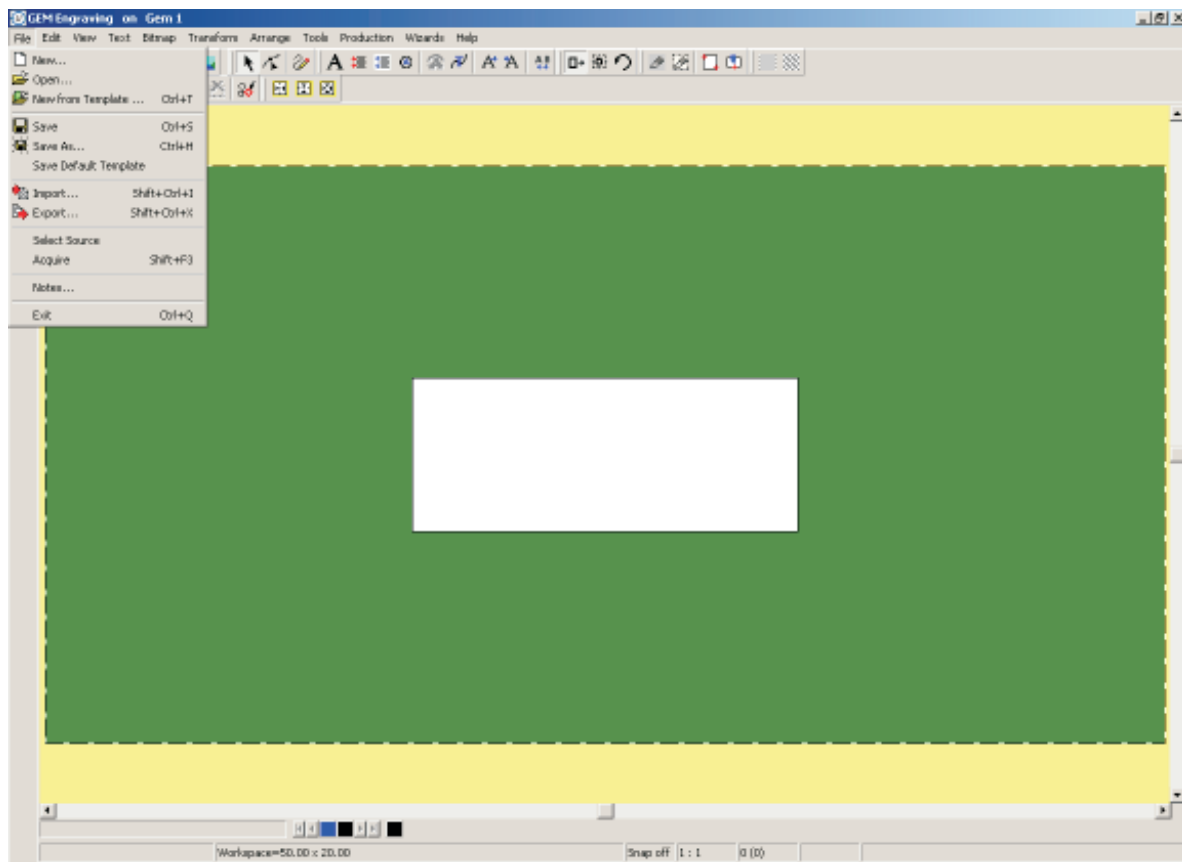


Figure 1

Left click "File", then left click "New" see Figure 1.

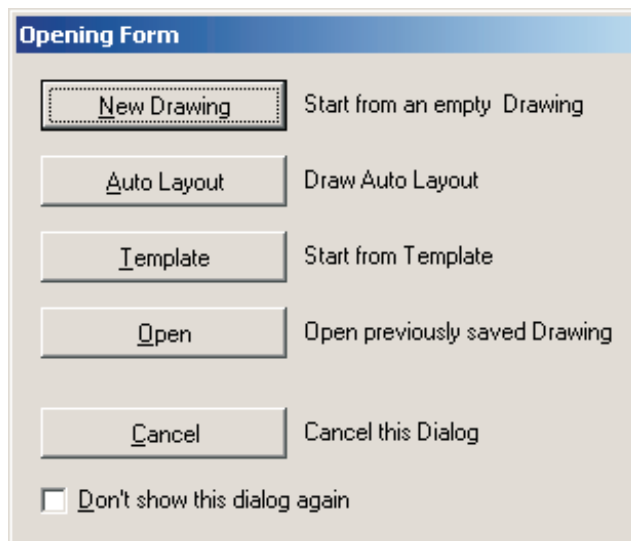


Figure 2

You will now see the Opening Form Dialogue Box see Figure 2, Left click on "Auto Layout".

Quick Start Guide

Chapter 6 Engraving a Trophy Plate

The Auto Layout screen will be shown, see Figure 3.

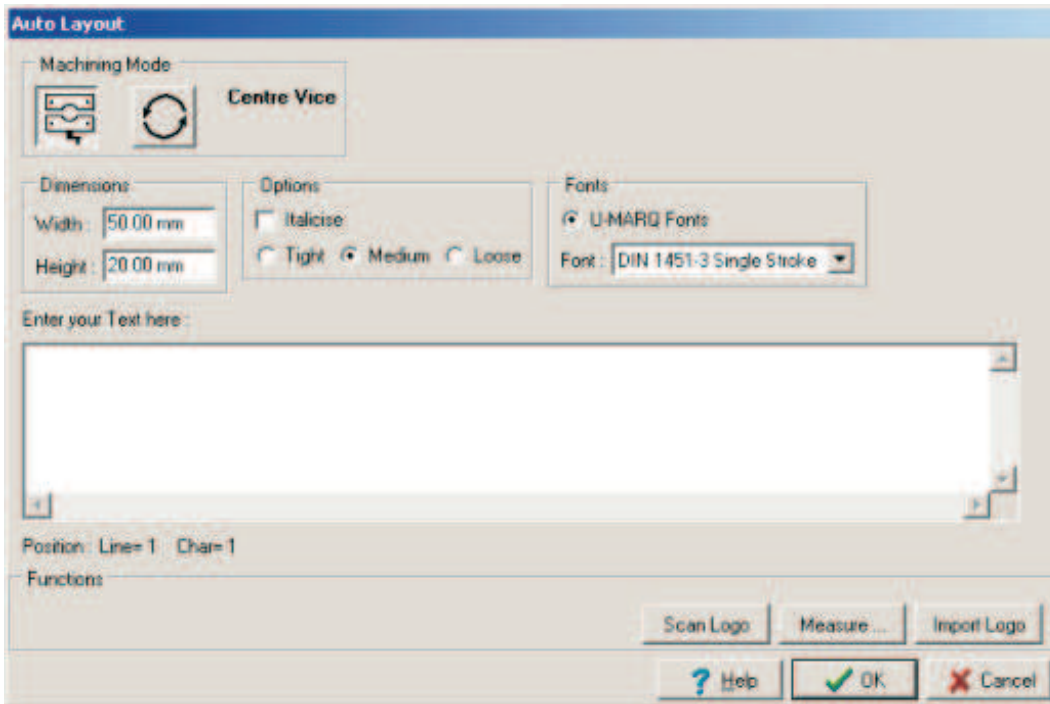


Figure 3

As we are engraving a flat trophy plate held within the centre vice, Left Click on the Centre Vice Icon in the Machine Mode Box, as Figure 3.

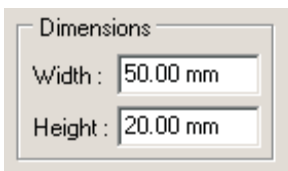


Figure 4

Enter the dimensions of your plate, in the Dimensions Box, see Figure 4.



Figure 5

To select the font you wish to use, Left Click On the Fonts Box and scroll through the list until you find the one you wish to use. Left Click on its name, see Figure 5.

Left click in the white space under the Enter your Text here Box and type in your text. Pressing "Enter" at the end of each line. When you are finished left click on "OK" to proceed, you will see your plate ready to be engraved, on screen, see Figure 6.

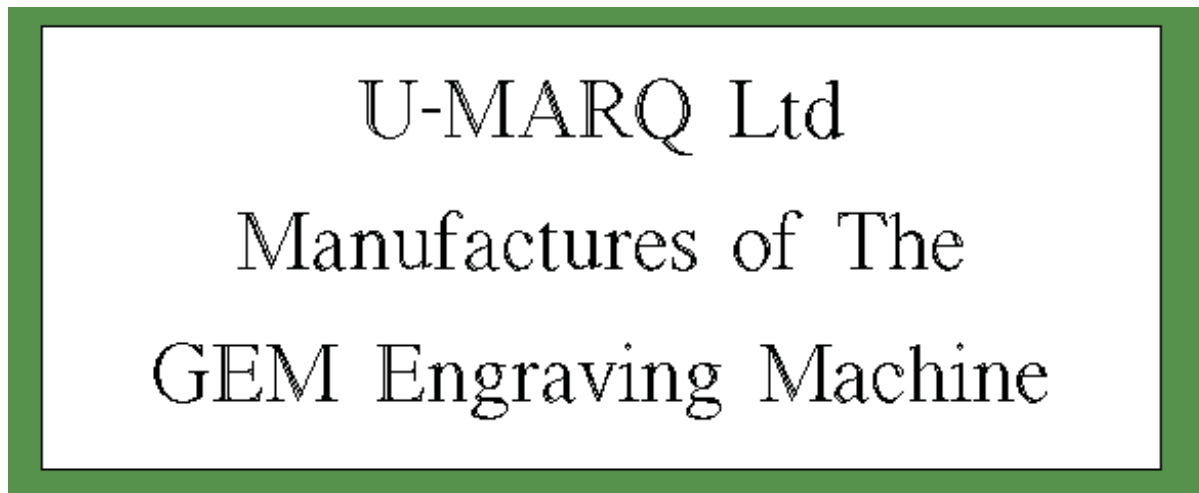


Figure 6

Engraving Your Plate

Left Click on Production from the Main Menu Bar, then Left Click "Quick Production". Or you can use the Quick Production icon on the Toolbar.

Quick Production Icon

You will now see a Dialogue Box called Processes, change your Process by Clicking On the arrow and selecting "Diamond Drag", then Click On "OK", see Figure 7.

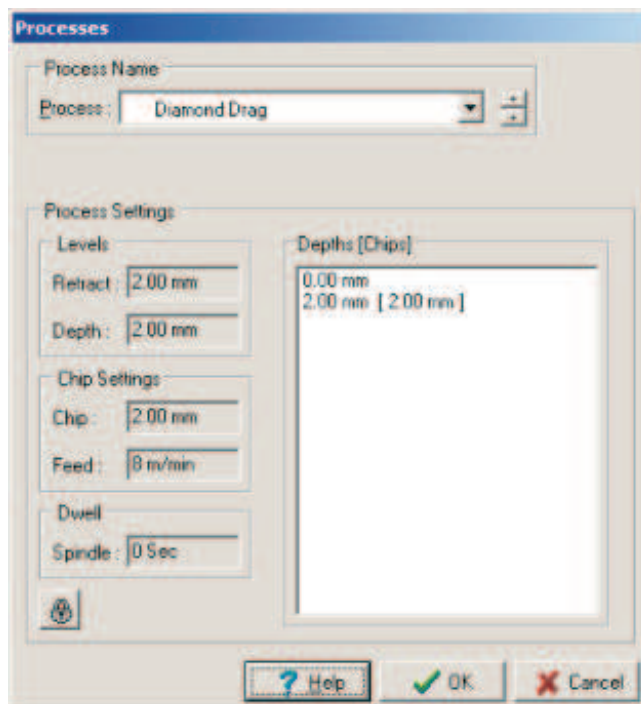


Figure 7

Quick Start Guide

Chapter 6 Engraving a Trophy Plate

You will now be asked to confirm that you wish to download the job to your GEM-RX Engraving Machine, Click On "Yes", see Figure 8.

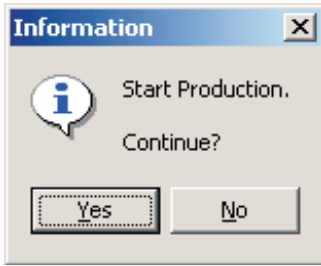


Figure 8

You will now get a Dialogue Box, confirming that the job has been processed by your GEM-RX Engraving Machine and is ready to engrave. Click On "OK", see Figure 9.

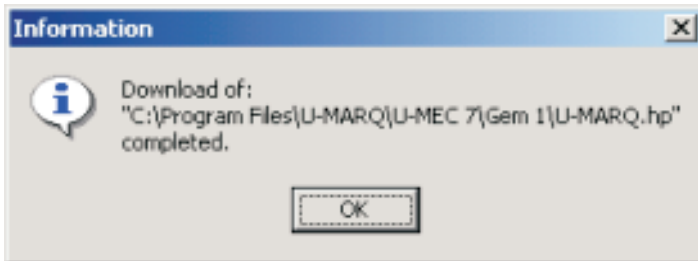


Figure 9

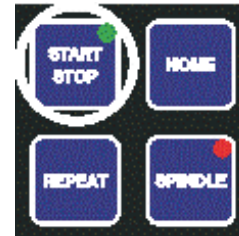


Figure 10

On your GEM-RX Engraving Machine you will notice that the "Start / Stop" Button is now lit. This indicates that the job has been downloaded to the machine, see Figure 10.

Put your Standard Jigs onto your GEM-RX Engraving Machine, then place your trophy plate to be engraved into the centre of the Jigs, See Figure 11.

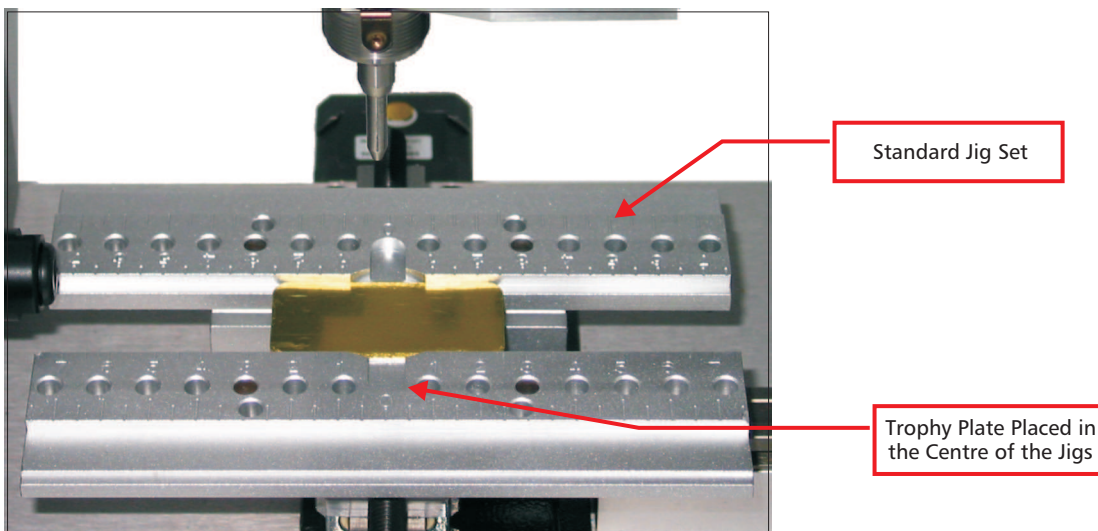


Figure 11

Screw the Light-touch Cutter Knob attached to your 120° Diamond Cutter, anti-clockwise into the top of the spindle shaft. **DO NOT OVER-TIGHTEN, hand tight only**, see Figure 12.



Figure 12

Press the "Start / Stop" Button on the Keypad, see Figure 13.

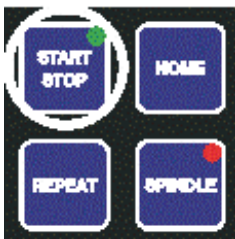
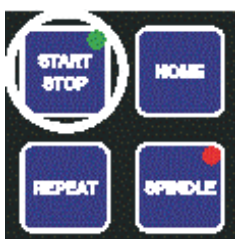


Figure 13

The machine will move to the middle of the Trophy Plate. If necessary move the head of the machine using the Direction Keys on the Keypad visually, to the centre of the plate, see Figure 14.



Figure 14



When you are satisfied that the cutter is central on the Trophy Plate, Press the "Start / Stop" Button on the Keypad.

Quick Start Guide

Chapter 6 Engraving a Trophy Plate

The machine now moves to the position of the First Cut of the engraving. Using the Z Down Key, lower the head of cutter until it just touches the surface of the plate, see Figure 15.

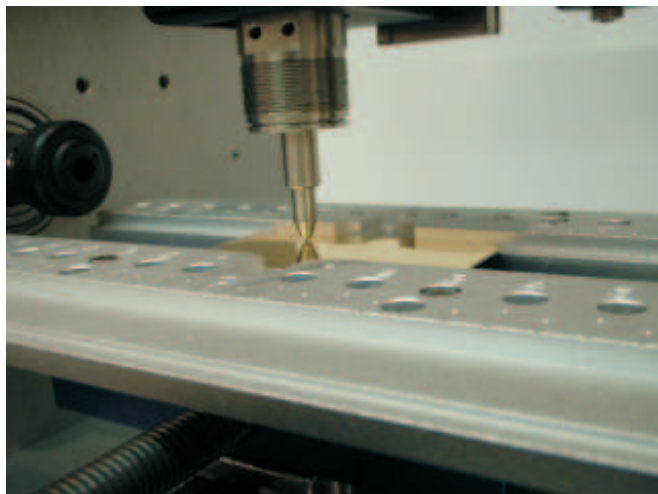


Figure 15

Press the "Start / Stop" Button on the Keypad. Your GEM-RX Engraving Machine, will now start to engrave you Trophy Plate, see Figure 16.

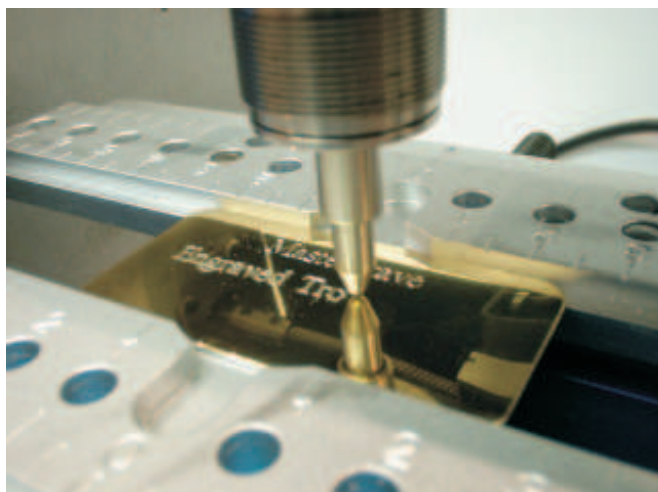


Figure 16

When the engraving has finished Press "Home" on the Keypad, see Figure 17.

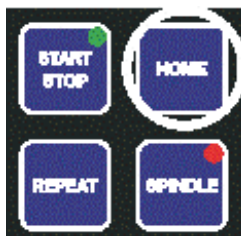


Figure 17

Congratulations! you have completed engraving your first Trophy Plate.

Repeating the Job

To repeat a job on your GEM-RX Engraving Machine, is a simple process. Remove your already engraved item and replace with a new one. Press the "Start / Stop Button", then Press the "Repeat" Button so that the "Start / Stop" is lit by a green light. Press the "Start / Stop" Button, the machine will start to engrave. All parameters will remain exactly the same, as the original job that was sent down.

A useful point to note, is that you can re-engrave over the same item using this function, if doing so do not remove the object from the vice. It is possible for you to Repeat the Job after pressing "Home", however you will need to reset the surface. This is done in exactly the same way as before using the "Z" Down Key on the Keyboard.

Producing Only Selected Item

It is possible to produce only a portions of an engraving, this is accomplished by Select the parts by Left Clicking On I., Then Left Clicking On "Production" on the Main Menu Bar, then Selecting "Produce Selected". Choose your processes as normal and send to the GEM-RX Engraving Machine, as if you where engraving the whole job

Note : If you turn an object blue by, selecting then Left Clicking On the blue square bottom of your screen, it becomes a design object and is not engraved.
