

## Engraving Scrolls

You can engraving Scrolls on your GEM-RX Engraving Machine. The standard Scroll layouts, are provided in Template format.

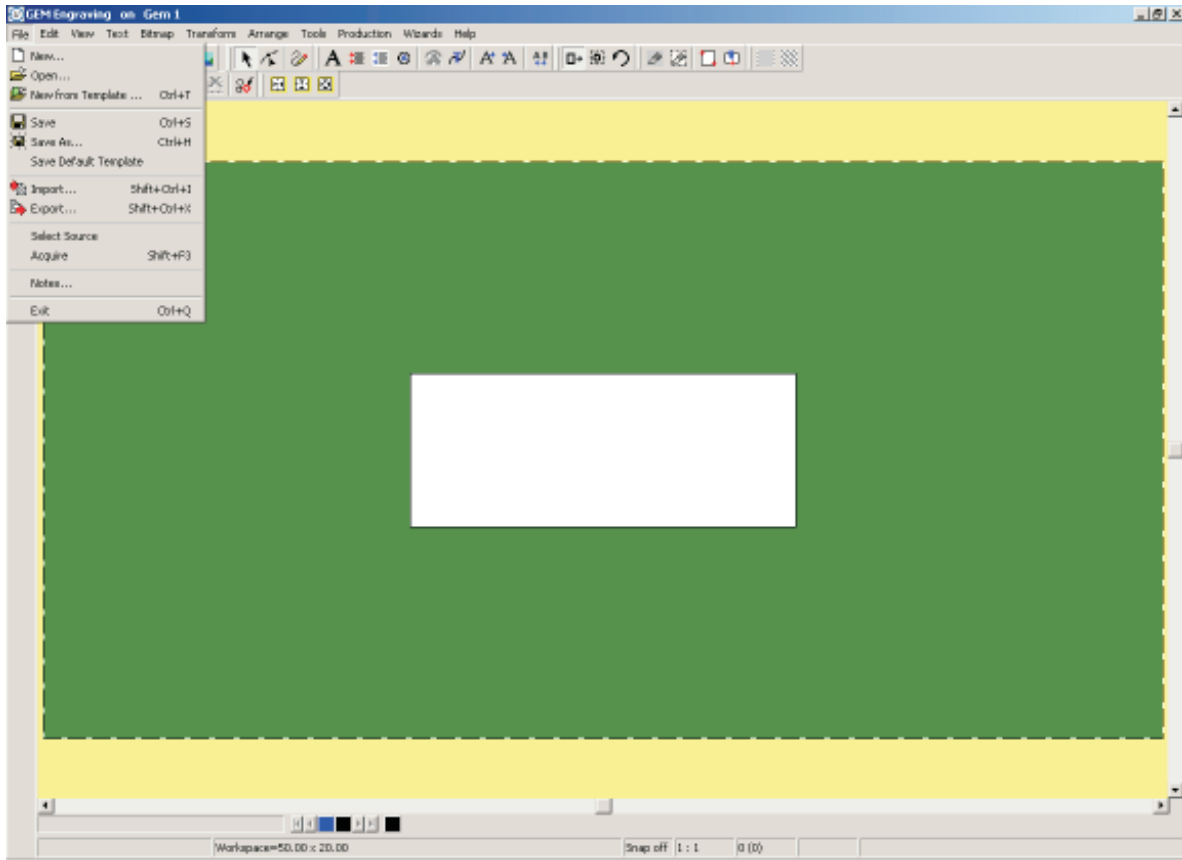


Figure 1

Left Click On "File" Click On "New", see Figure 1.

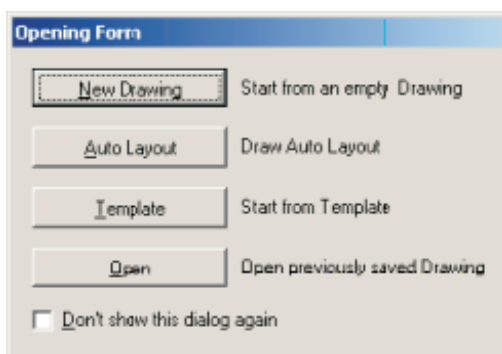


Figure 2

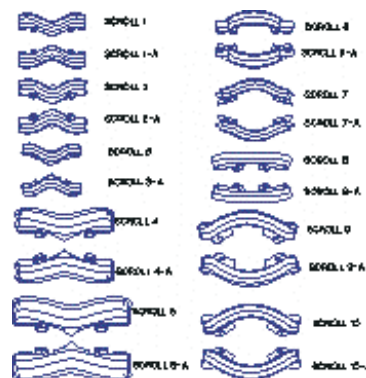


Figure 3

From the Opening Form, Left Click On "Template", see Figure 2.

Navigate through the file system, you are looking for Scrolls. The path for this is : Your Hard Drive (normally C) Program Files / Visualtoolbox / Vistool 7 / Templates / Scrolls. Once you have navigated to the Scrolls Folder, Left Clicking on the Scroll Menu.SDT and Clicking On "Open" will allow you to see a visual representation of all the Scroll Templates, see Figure 3. Once you have chosen you desired scroll, Left Click On "File" Left Click On "New from Template", select the scroll number you require.

# Quick Start Guide

## Chapter 11 Engraving Scrolls

You will now see the Scroll you have selected on screen with sample text on it, see Figure 4.

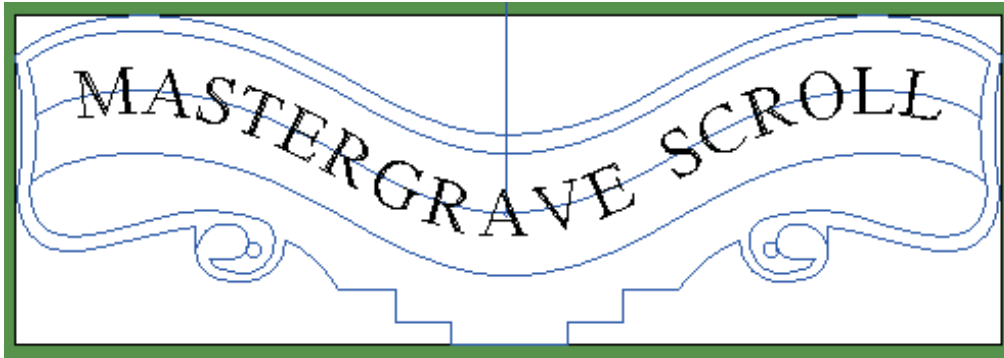


Figure 4

Select the text by Left Clicking On it., the text will go Dotty. Right Click On the text whilst it is Dotty, a Selection Dialogue Box will show, see Figure 5. Select Basic Text Edit, you will now see and be able to use the Basic Text Editor, see Figure 6.

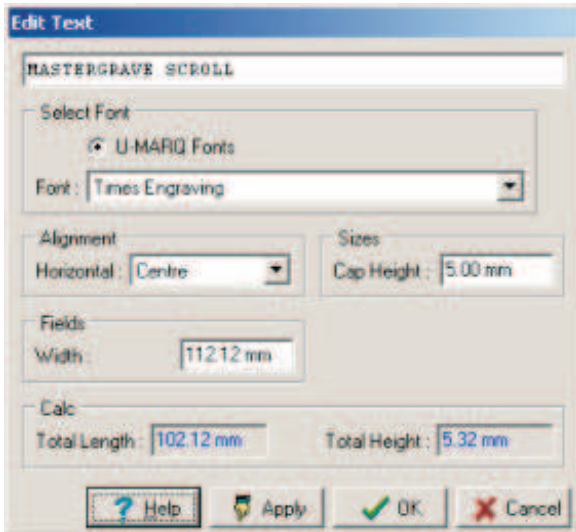


Figure 6

Duplicate Single	Ctrl+D
Basic Text Edit	Alt+S
Kern Text	K
<input checked="" type="checkbox"/> Dynamic Move	
Dynamic Resize	
Dynamic Rotate	

Figure 5

By Left Clicking within the Text box, you can Delete the sample text and enter the text you wish to use. It is possible at this stage to change the Font and Cap Height. Left Click within the relevant area and enter your changes. When you are finished editing Click On "OK". Your Scroll will now be shown on the screen, read to engrave, see Figure 7.

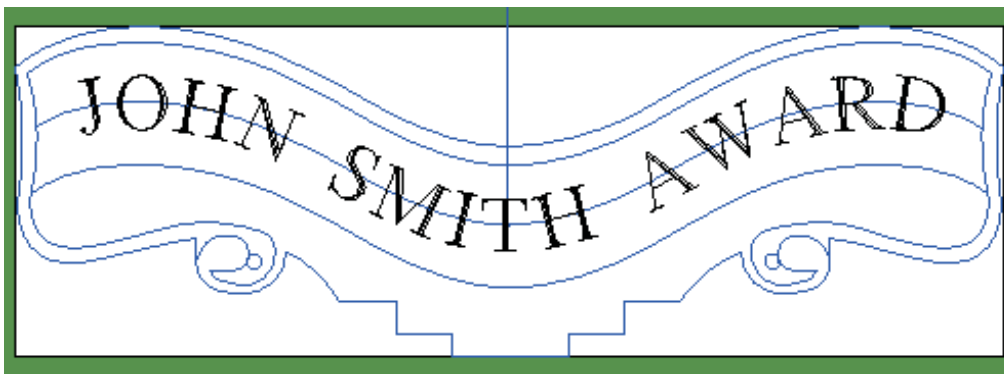


Figure 7

Attach your Standard Jigs to the GEM-RX Engraving Machine and place your scroll onto them as shown in, Figure 8.

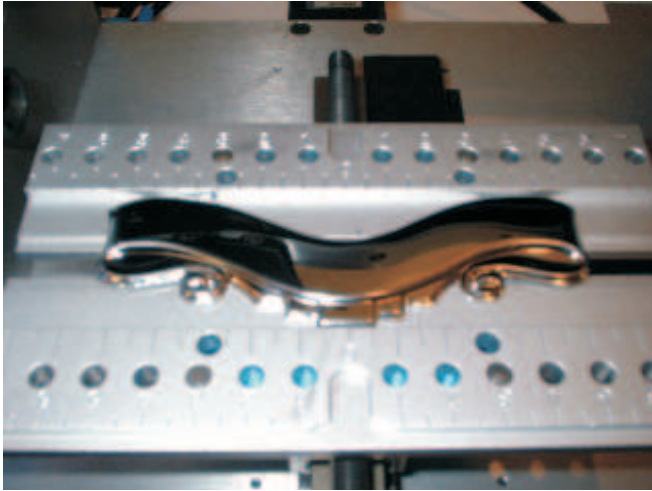


Figure 8



Figure 9

To align the Scroll correctly it is necessary to set a reference position. Move the GEM-RX Engraving Machine head to the centre of the scroll by using the "X" "Y" Keypad controls, see Figure 9. The aim is to get the GEM-RX Engraving Machine head over the centre point of the scroll, as indicated on your computer screen by the point, see Figure 10.



Figure 10



Zoom Tool Icon

On your computer Left Click On the "Zoom Tool" on the Toolbar, this function allows you select an area to Zoom into. Hold down the left mouse button and draw and box around the area central area and release the Left Mouse Button, see Figure 11.



Central Area to Zoom Into

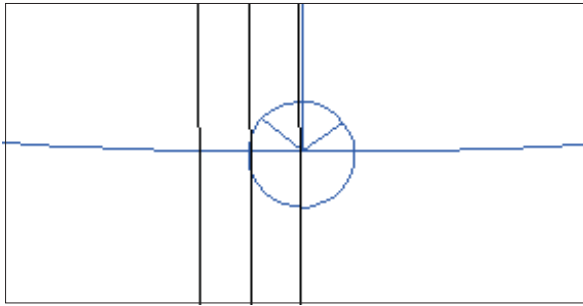
Figure 11

# Quick Start Guide

## Chapter 11 Engraving Scrolls

---

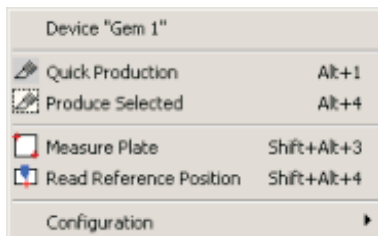
You will now see an enlarged area, that you just Zoomed Into, see Figure 12.



**Figure 12**

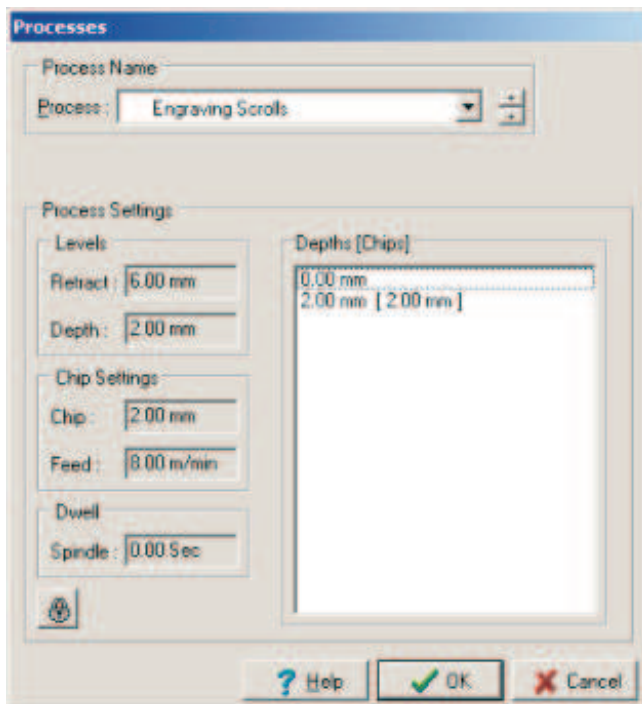
Left Click On "Production" on the Main Menu Bar, then Left Click On "Read Reference Position". Left Click at the bottom of the 'V' within the circle, see Figure 12.

You will see that the scroll on screen has been re-aligned to the correct position on the Machine Bed.



**Figure 13**

Left Click On "Production" from the Main Menu Bar, then Left Click On "Quick Production", see Figure 13.



**Figure 14**

You will now see the Processes Dialogue Box, with Engraving Scrolls already selected, Click On "OK", see Figure 14.

You now are asked if you wish to send your job to the GEM-RX Engraving Machine, Click On "Yes"., see Figure 15.

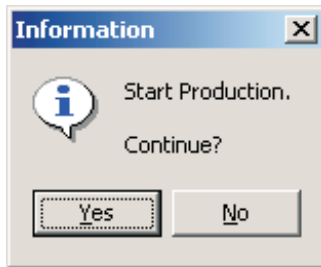


Figure 15

You are now informed that the jobs has been processed by the GEM-RX Engraving Machine and is ready to engrave. Click On "OK".

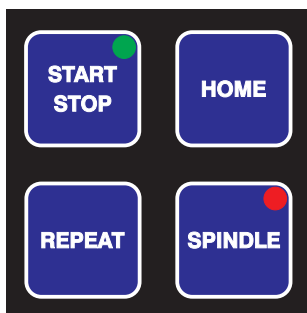


Figure 16

On your GEM-RX Engraving Machine you will notice that the Start / Stop Button is lit. This indicates that the job has been downloaded to the machine, see Figure 16.



Figure 17

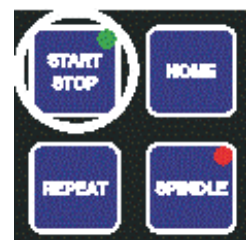


Figure 18

Screw the 'Light-touch' anti-clockwise into the top of the spindle shaft. **DO NOT OVER-TIGHTEN - hand tight only**, see Figure 17. Press "Start / Stop" on the Keypad, see Figure 18.

## Quick Start Guide

### Chapter 11 Engraving Scrolls

---

The GEM-RX Engraving Machine Head will now move to the middle of the job, see Figure 19.

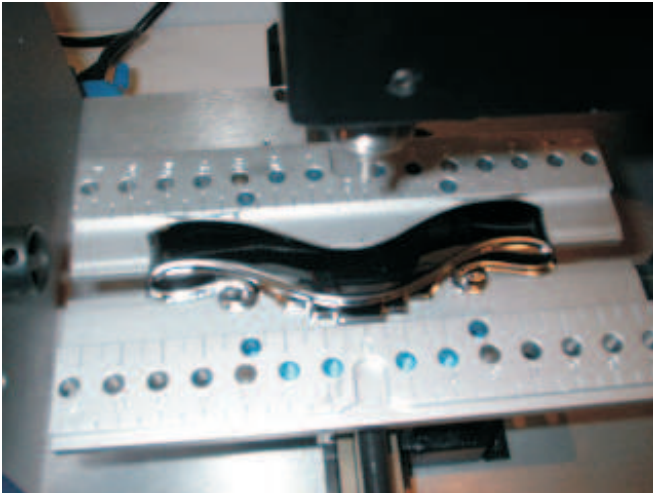


Figure 19



Figure 20

Press "Start / Stop" again. The GEM-RX Engraving Machine now moves to the first cut of the engraving. Using the "Z Down" Key, see Figure 20 lower the head of cutter, until it just touches the surface of the scroll, see Figure 21.

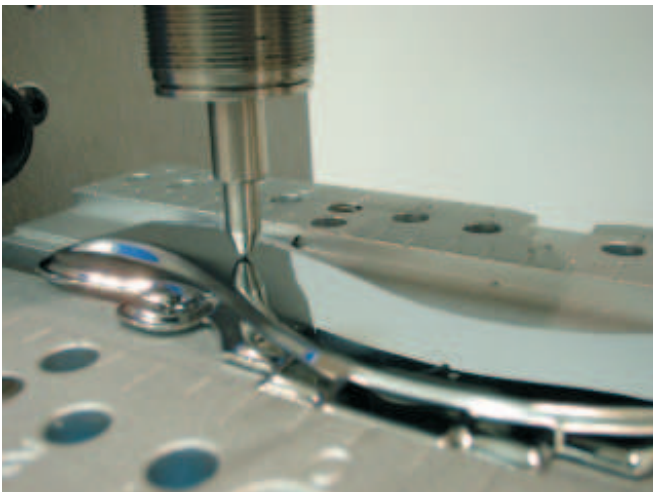


Figure 21

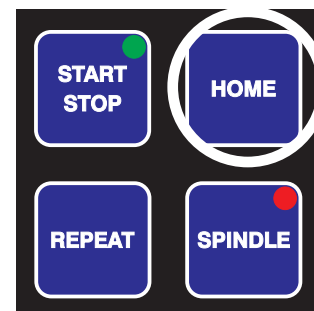


Figure 22

When the engraving has finished press "Home" on the Keypad, see Figure 22, the GEM-RX Engraving Machine will return to its Home position, top left.

Congratulations you have just engraved your first Scroll.

### Repeating the Job

To repeat a job on your GEM-RX Engraving Machine, is a simple process. Remove your already engraved item and replace with a new one. Press the "Start / Stop Button", then Press the "Repeat" Button so that the "Start / Stop" is lit by a green light. Press the "Start / Stop" Button, the machine will start to engrave. All parameters will remain exactly the same, as the original job that was sent down.

A useful point to note, is that you can re-engrave over the same item using this function, if doing so do not remove the object form the vice. It is possible for you to Repeat the Job after pressing "Home", however you will need to reset the surface. This is done in exactly the same way as before using the "Z" Down Key on the Keyboard.

### Producing Only Selected Item

It is possible to produce only a portions of an engraving, this is accomplished by Select the parts by Left Clicking On I., Then Left Clicking On "Production" on the Main Menu Bar, then Selecting "Produce Selected". Choose your processes as normal and send to the GEM-RX Engraving Machine, as if you where engraving the whole job

---

**Note :** If you turn an object blue by, selecting then Left Clicking On the blue square bottom of your screen, it becomes a design object and is not engraved.

---