

Measuring a Plate Using the GEM-RX Engraving Machine

You can use your GEM-RX Engraving Machine to measure the Size of a Plate or the Engraving Area without using rulers or other mechanical measuring devices.

Please ensure that you have placed the cutter that you are intending to use during this job, in the GEM-RX Engraving Machine Spindle.

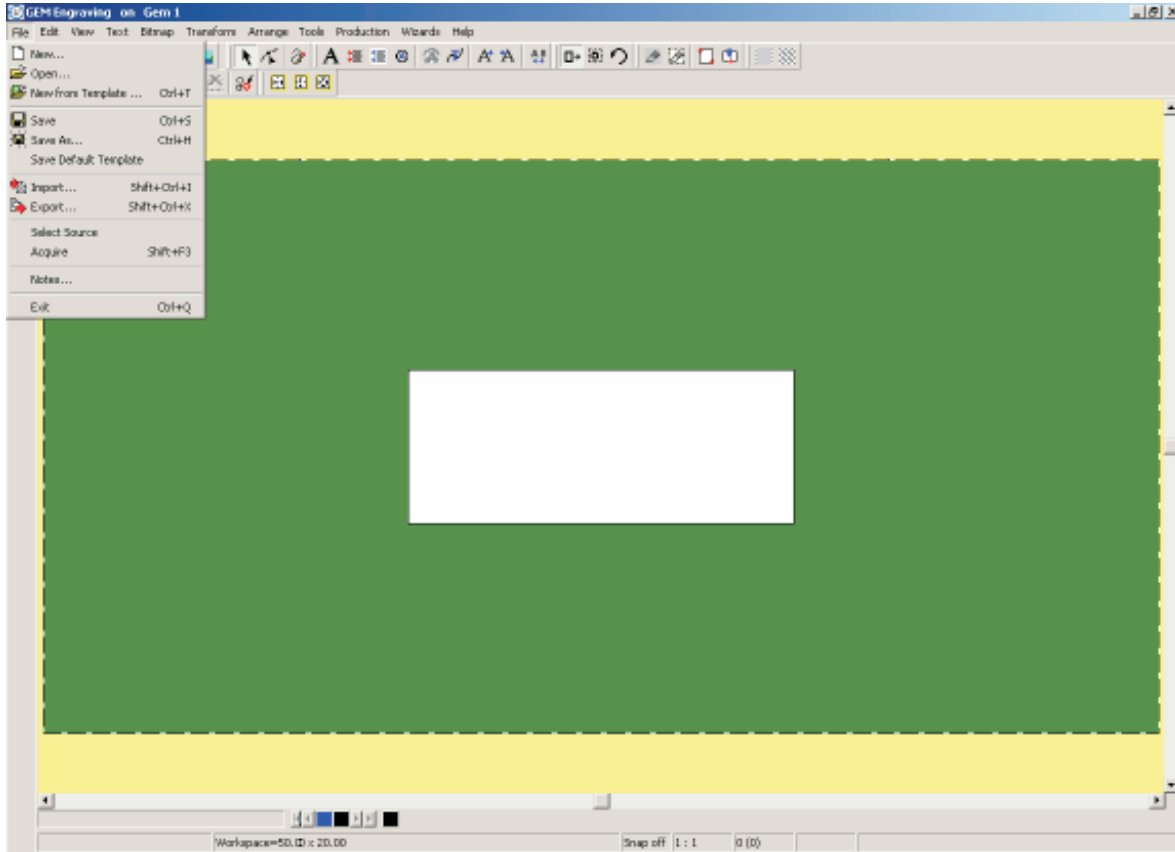


Figure 1

Left Click On "File", then Click On "New", see Figure 1. You will see the Opening Form Dialogue Box, Left Click On "Auto Layout", see Figure 2.

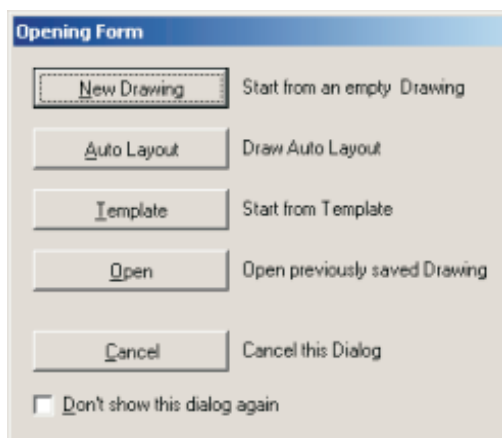


Figure 2



Centre Vice Icon

The Auto Layout Dialogue Box will be shown, as we are doing a Flat Plate held within the centre vice. Left Click On the Centre Vice Icon.

Quick Start Guide

Chapter 12 Automatically Measuring a Plate

To measure the size of your flat plate and its position Left Click On "Measure", see Figure 3. At this stage you do not have to enter any text.

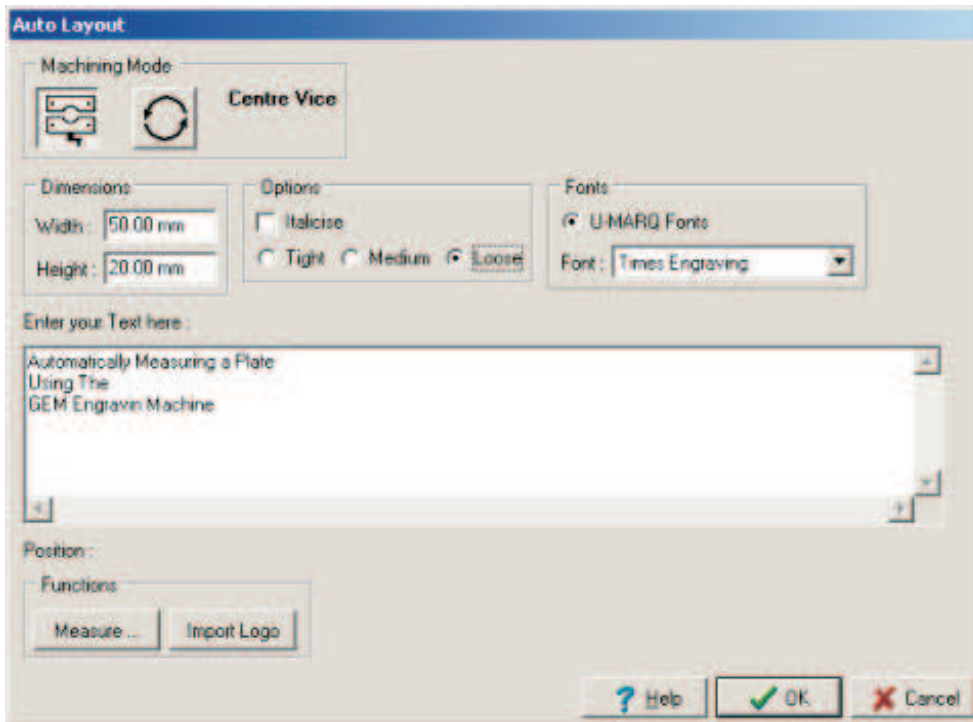


Figure 3

You will now be prompted to move the GEM-RX Engraving Machine to one corner of the plate.

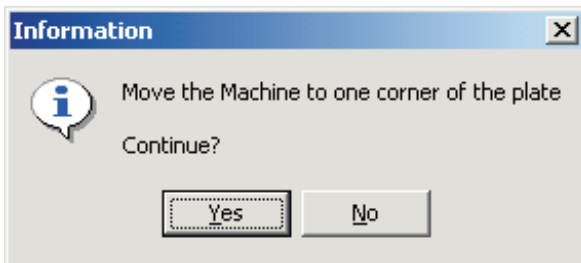


Figure 4



Figure 5



Figure 6

Press the "Start / Stop" on the GEM-RX Engraving Machine Keypad and ensure that it is lit., see Figure 5. Move the GEM-RX Engraving Machine to your engraving area, top left corner, using the GEM-RX Keypad "X" "Y" direction Keys, see Figure 6.

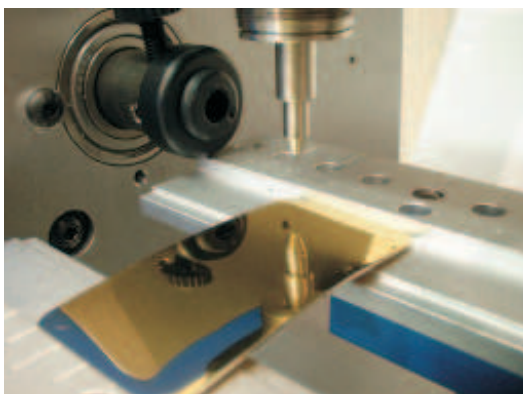


Figure 7

The engraving head should now be positioned over the corner position of the engraving area, see Figure 7.

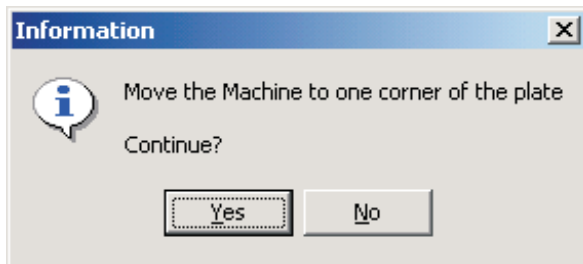


Figure 8

Refer back to your computer and Left Click On "Yes", see Figure 8.

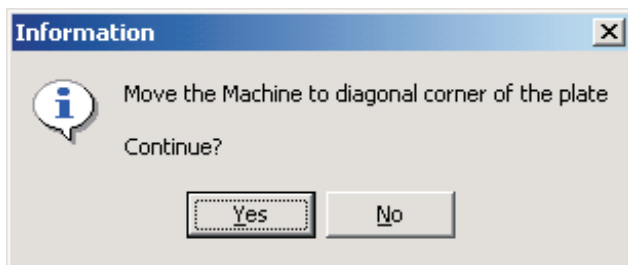


Figure 9

You will now be prompted to move the GEM-RX Engraving Machine, to the diagonal corner of the engraving area, see Figure 9. Using the GEM-RX Engraving Machines "X" "Y" Direction Keys, again move the Machines Engraving Head to the bottom right corner of the engraving area, see Figure 10.

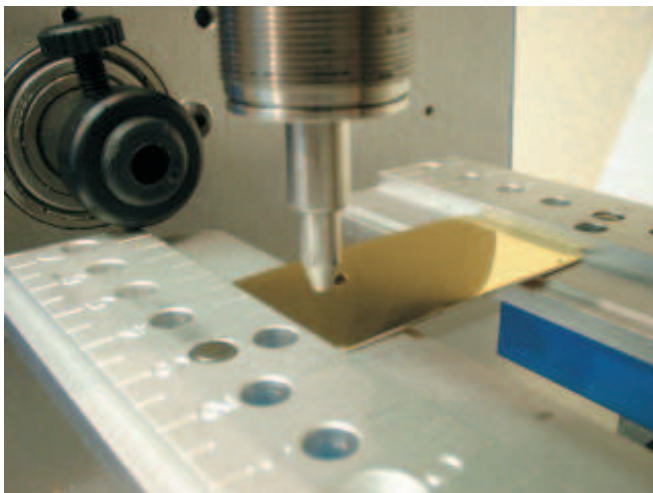


Figure 10

The GEM-RX Engraving Machines Engraving Head, should now be positioned over the bottom right corner of the engraving area. Refer back to your computer and Left Click On "Yes" in the Dialogue Box shown in, Figure 9.

Quick Start Guide

Chapter 12 Automatically Measuring a Plate

You will see in the Auto Layout Dialogue Box, the size has changed, this reflects now the size you have measured using the GEM-RX Engraving Machine. You can now enter your desired text., then Click On "OK", see Figure 11.

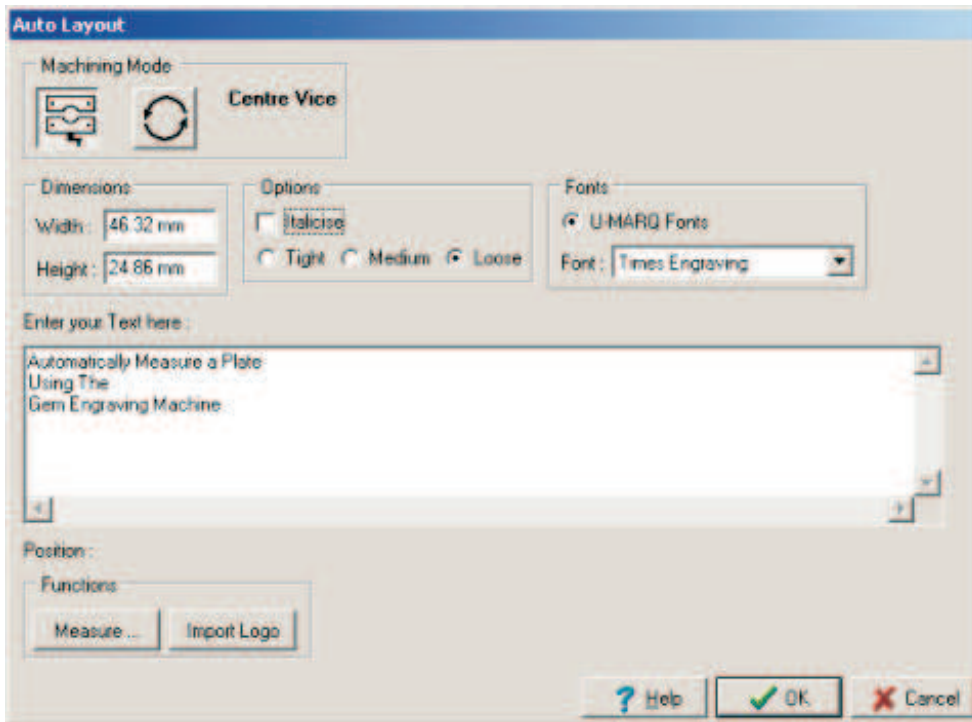


Figure 11

Your Plate is now shown on the screen, see Figure 12.

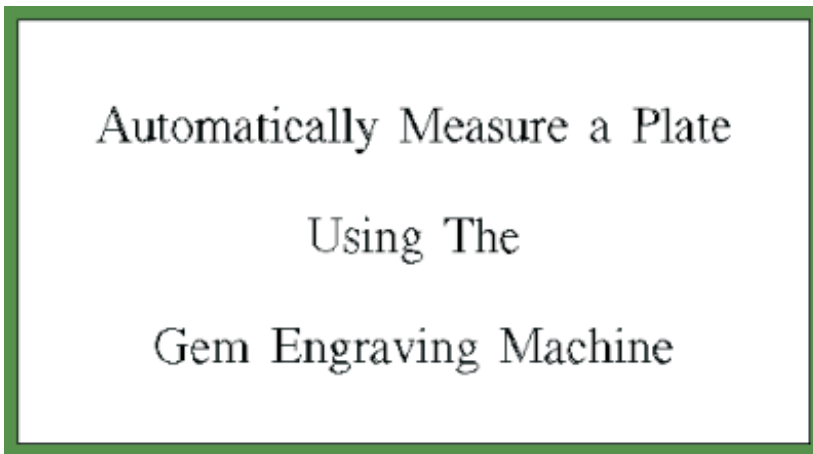


Figure 12

You can now proceed to engrave your object as normal, refer to the relevant section of this manual for the type of material you are engraving.