

## Importing Files

You can Import Files from other Drawing Programs CorelDRAW, Adobe Illustrator etc.), Clip Art (some is included with you GEM-RX Engraving Program) and many other sources.

### Importing Using Auto Layout

You can Import Files directly into your Auto Layout.

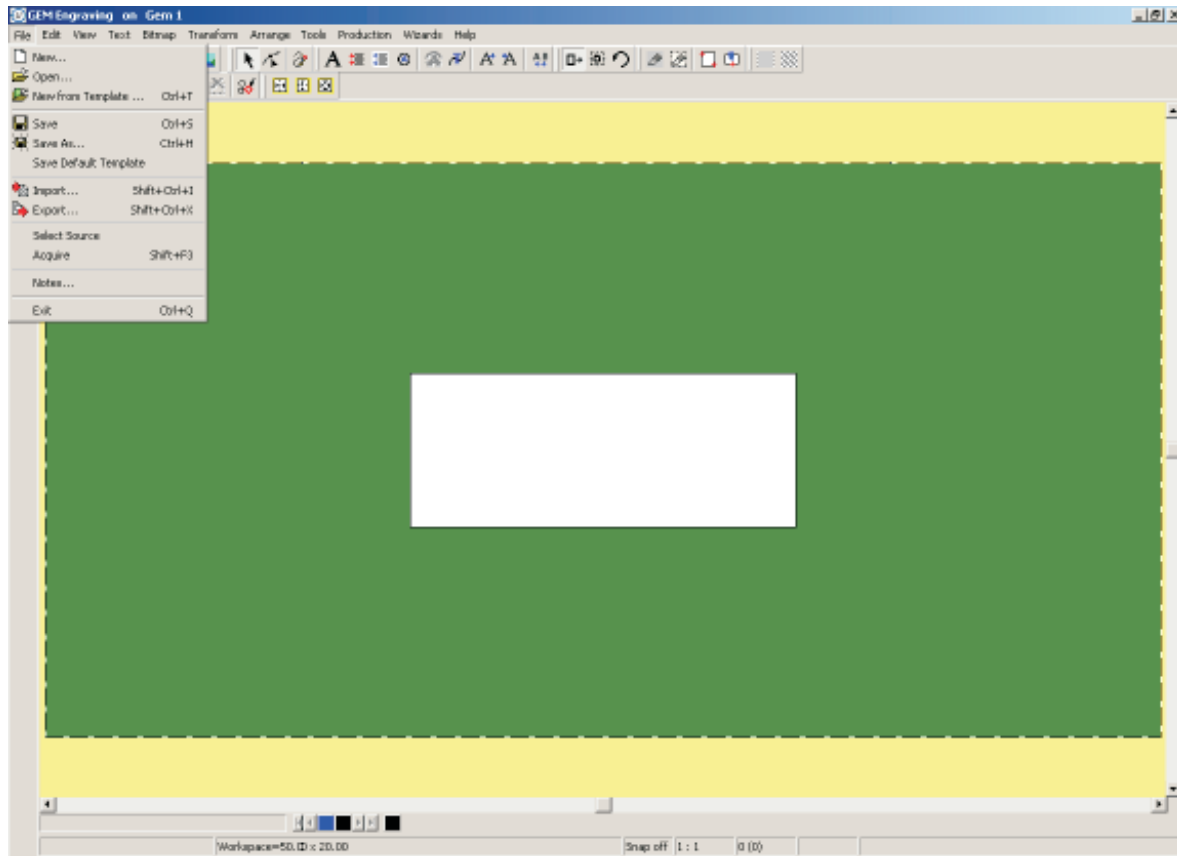


Figure 1

Left Click On "File" on the Main Menu Bar, then Click On "New", see Figure 1.

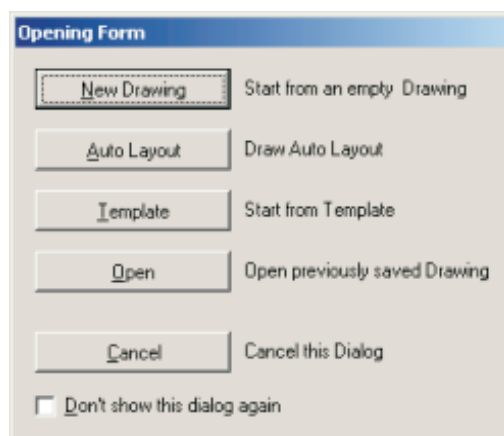


Figure 2

You will see the Opening Form Dialogue Box, Left Click On "Auto Layout", see Figure 2.

# Quick Start Guide

## Chapter 13 Importing Files

The Auto Layout Dialogue Box will be shown. Enter the Height and Width of your engraving area, the Machine Mode you are using i.e. either Centre Vice or Rotary as normal then Left Click On the "Import" Button, see Figure 3.

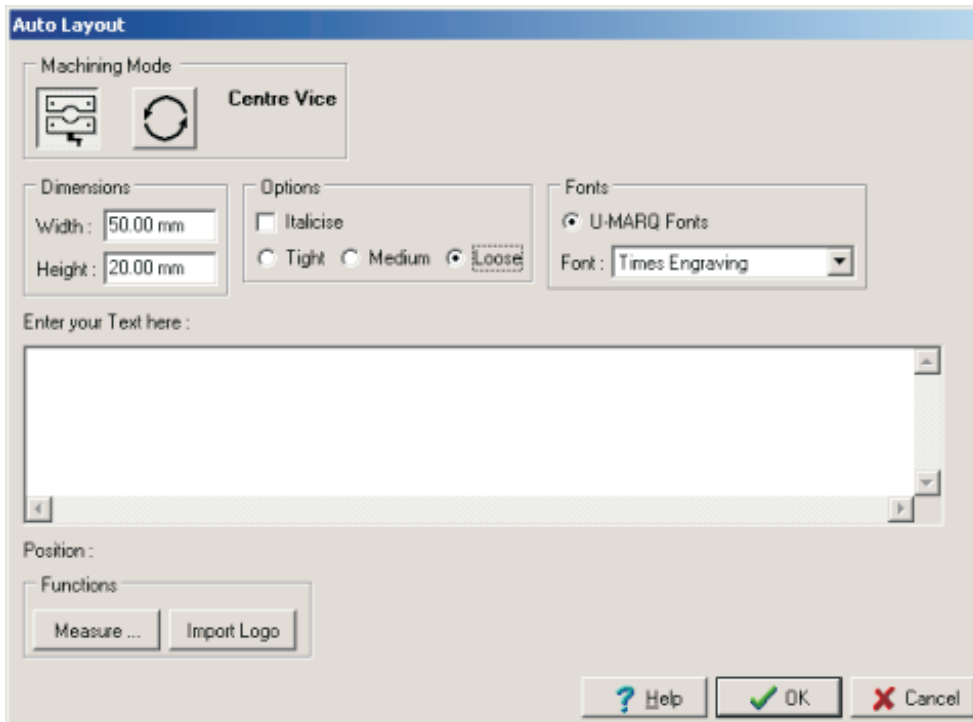


Figure 3

You will now see a Dialogue Box that allows you to navigate your way through your computer, to find the file you wish to Import.. You are able to import AI and HPGL (also known as PLT) file format. For this example we are using the Black & Decker logo found within the software. Once you have found the file you are going to Import Left Click On "Open", see Figure 4.

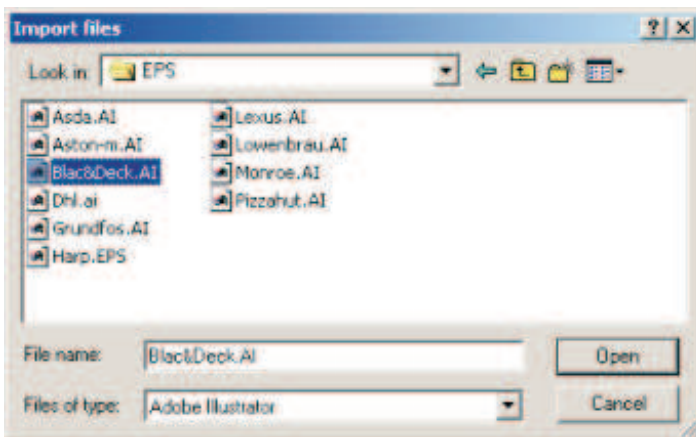


Figure 4

You will now see the Auto Connect Dialogue Box, Left Click On "Yes". This may take some time, dependent on size of drawing and the speed of your computer. You will now be presented with the 'Auto Layout Logo Dialogue Box. This allows you to Enter the Height of the Logo and the Line that you wish the Logo to be placed on, within your Text Layout. When you are satisfied Left Click On "OK", see Figure 5.

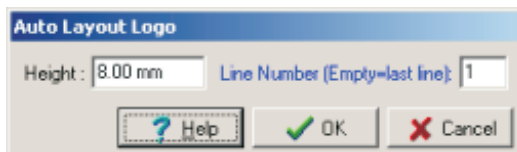


Figure 5

You will now be returned to the Auto Layout Dialogue Box. Enter the text you wish to engrave, within the 'Enter your Text here' area. You will notice the screen has changed slightly to show where the logo is going to be placed. Left click 'OK' to finish, see Figure 6.

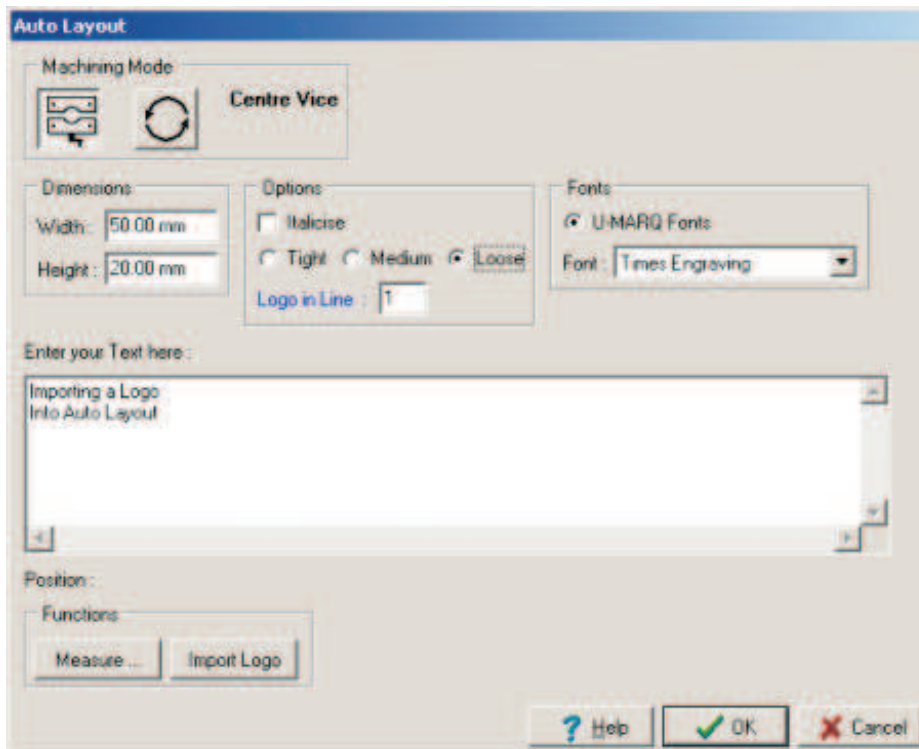


Figure 6

You will now see the engraving area with Logo on your screen, ready to engrave, see Figure 7.



Figure 7

# Quick Start Guide

## Chapter 13 Importing Files

### Importing Files Outside Auto Layout

You can Import File without going into Auto Layout.

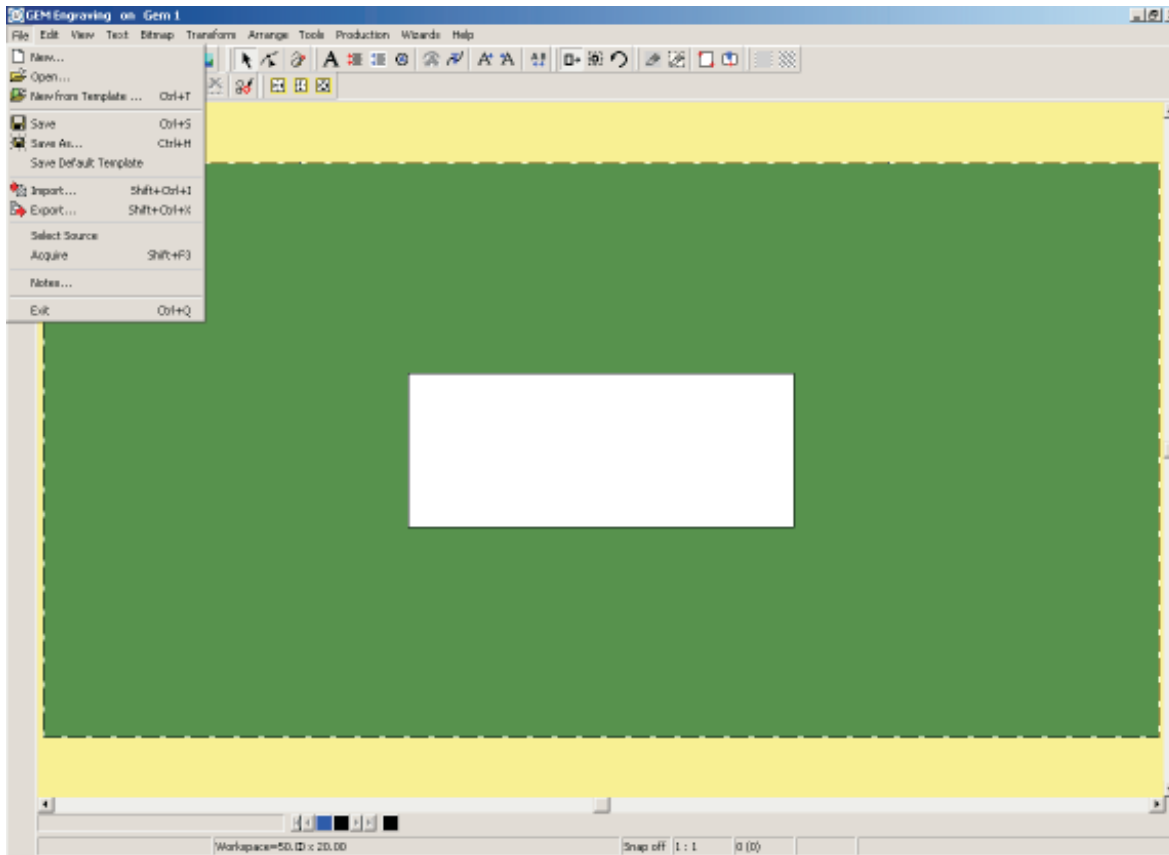


Figure 1

Left Click On "File", then Click On "New", see Figure 1.

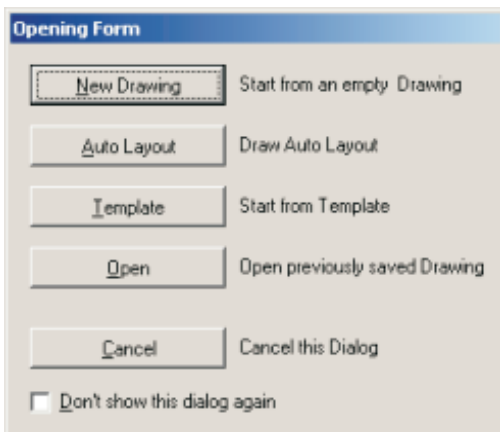


Figure 2

You will see the Opening Form Dialogue Box, Left Click On "New Drawing", see Figure 2. Select the Machine Mode, either Centre Vice or Cylindrical. From the Main Menu Bar Click On "File" the Import. You need to navigate to the Folder where the file is kept. Click On the "File Name", then Click On "Open", see Figure 3.

You will now see the Auto Connect Dialogue Box, Left Click On "Yes". This may take some time, dependent on size of drawing and the speed of your computer.

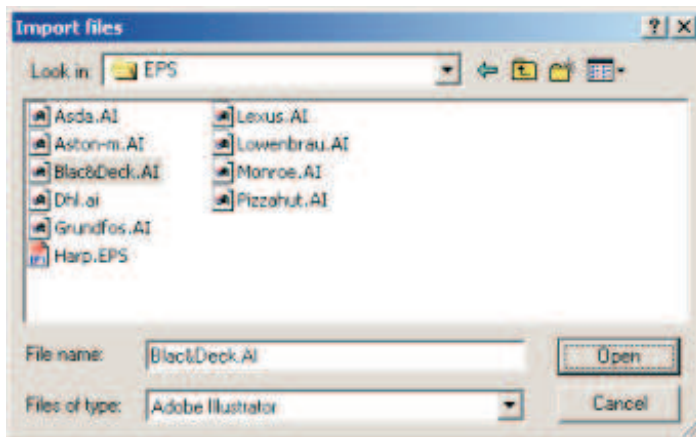


Figure 3

Now Click in the centre position of the Logo in the Workspace.



Figure 4

You may find your Logo is larger than require, if so you ca re-size by selecting (the Logo will go Dotty) and then using the Re-size Tool.

**Note :** For more details on altering layouts, see Page 79.