

Engraving Settings

Using the Spindle

When engraving you may wish to have the motor running on the spindle, this can give a different finish or effect. To do this is a very simple operation. After setting the surface. Press "Spindle", see Figure 1, you will hear and see the spindle turning. Press the "Start / Stop" Button to begin engraving.



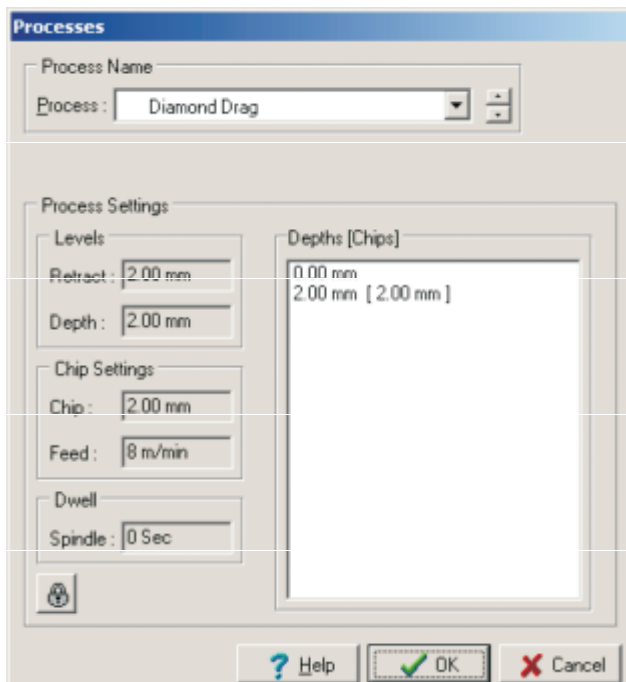
Figure 1

Processes

Within the software it is possible to choose different processes for engraving. Following are brief explanations of these Processes and their uses.

Diamond Drag

Principally used on jewellers brass, trophy aluminium, silver, and gold..



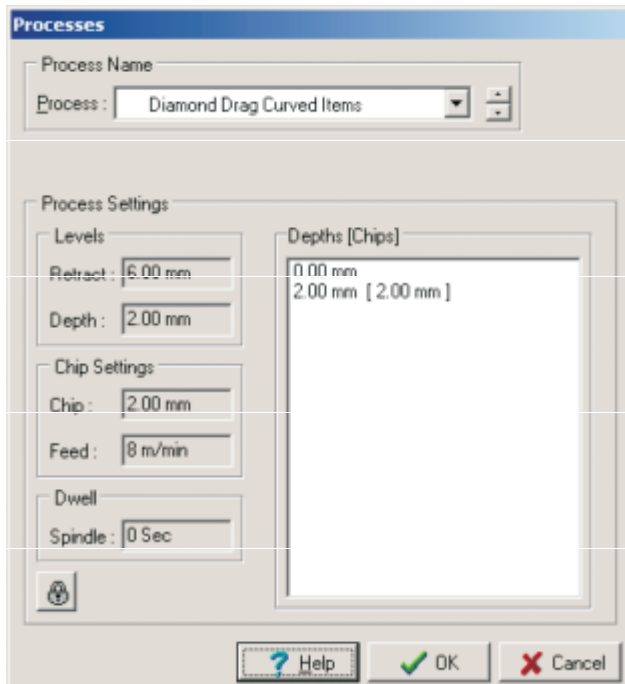
Retract - 2mm
Depth - 2mm
Chip - 2mm
Spindle - Off

Quick Start Guide

Chapter 16 Engraving Settings

Diamond Drag Curved Items

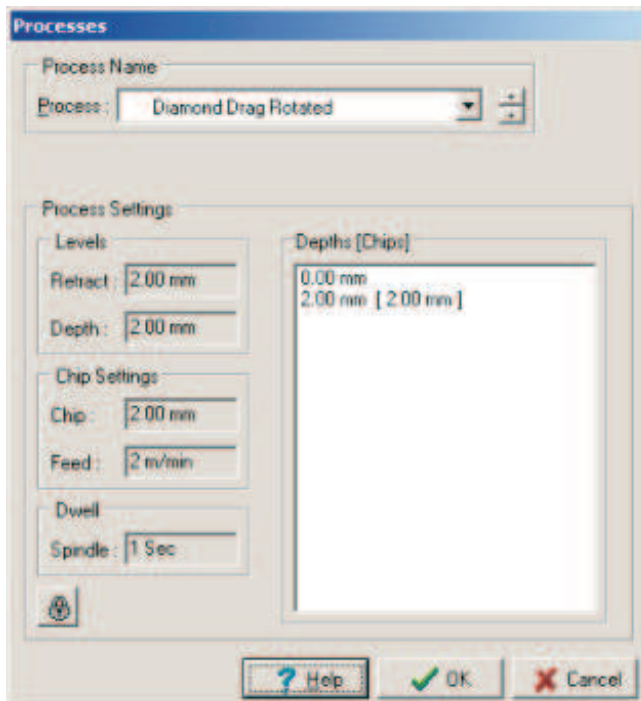
Principally used on jewellers brass, trophy aluminium, silver, and gold. It is necessary to use this when the object being engraving has a curved surface, eg. Hip flasks.



Retract - 6mm
Depth - 2mm
Chip - 2mm
Spindle - Off

Diamond Drag Rotated

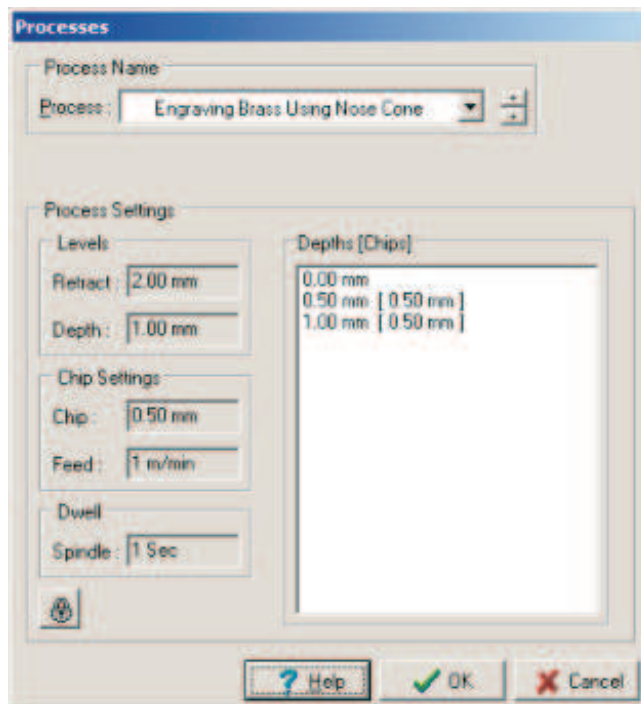
Principally used on jewellers brass, trophy aluminium, silver, gold, and glass.



Retract - 2mm
Depth - 2mm
Chip - 2mm
Spindle - On
Dwell 1 Sec

Engraving Brass with Nose Cone

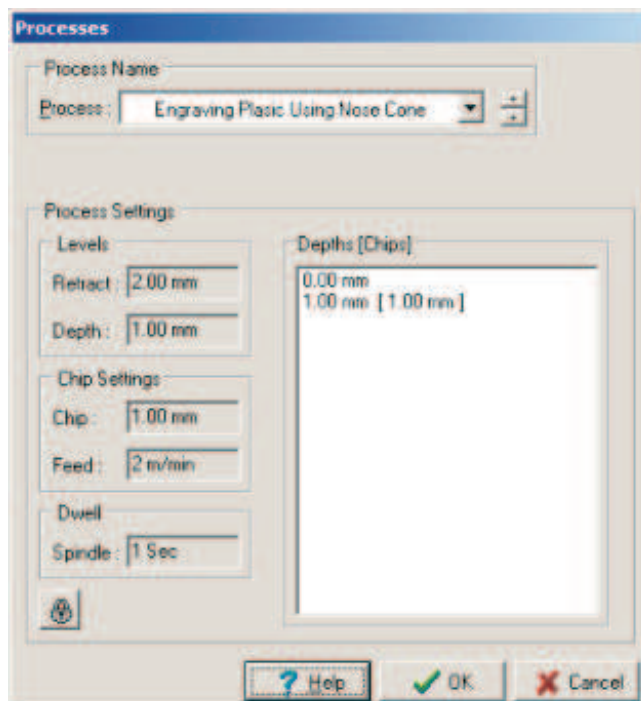
Used on brass and aluminium. To be used in conjunction with nose cone and carbide cutters.



Retract - 2mm
Depth - 1mm
Chip - 0.5mm
Spindle - On
Dwell 1 Sec

Engraving Plastic with Nose Cone

Used on plastics and laminates. To be used in conjunction with nose cone and carbide cutters.



Retract - 2mm
Depth - 1mm
Chip - 1mm
Spindle - On
Dwell 1 Sec

Note : In some of the Processes there is a Dwell. This delays the "Z" axis going down into the material until the Spindle Motor has reach full speed.