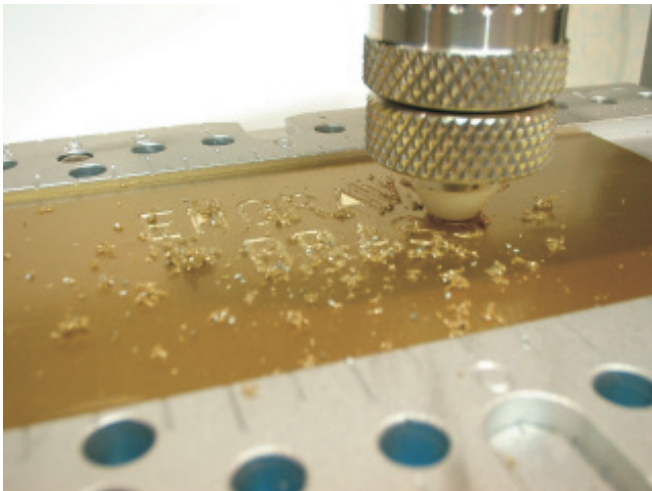


Engraving a Brass Plate

Engraving a Brass Plate can be achieved using the same method as Engraving a Laminated Plastic Plate, see Page 31.



Engraving Brass Using a Nose Cone

To protect the surface of the brass from scratching, apply a vinyl material onto the face of the brass. Scratches are caused by two things, swarf trapped under the nose cone, or a nose cone that is damaged.

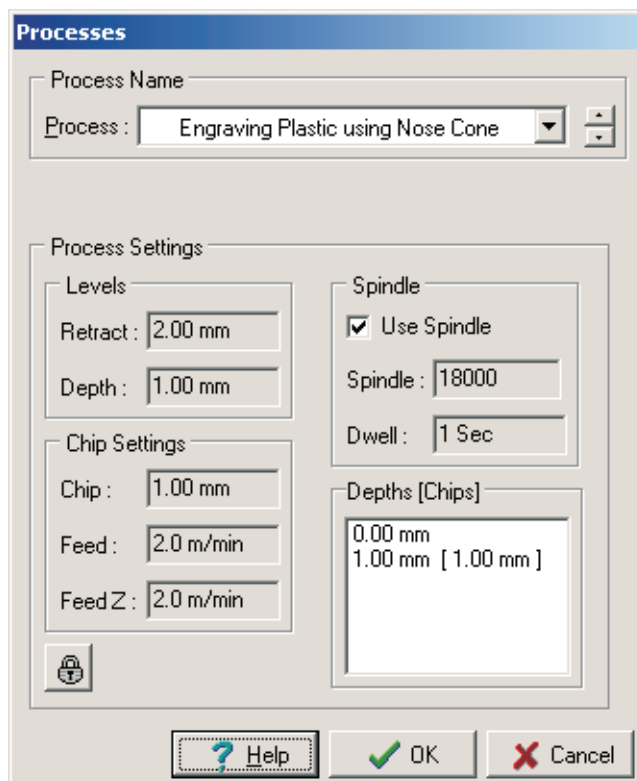


Figure 1

The process you are required to choose is Engraving Brass Using Nose Cone, see Figure 1. This will engrave in two passes over the material surface, to achieve a good finish.

Repeating the Job

To repeat a job on your GEM-FX Engraving Machine, is a simple process. Remove your already engraved item and replace with a new one. Press the "Start / Stop Button", then Press the "Repeat" Button so that the ""Start / Stop" is

Quick Start Guide

Chapter 8 Engraving a Brass Plate

lit by a green light. Press the "Start / Stop" Button, the machine will start to engrave. All parameters will remain exactly the same, as the original job that was sent down.

A useful point to note, is that you can re-engage over the same item using this function, if doing so do not remove the object from the vice. It is possible for you to Repeat the Job after pressing "Home", however you will need to reset the surface. This is done in exactly the same way as before using the "Z" Down Key on the Keyboard.

Producing Only Selected Item

It is possible to produce only a portions of an engraving, this is accomplished by Select the parts by Left Clicking On I., Then Left Clicking On "Production" on the Main Menu Bar, then Selecting "Produce Selected". Choose your processes as normal and send to the GEM-FX Engraving Machine, as if you where engraving the whole job

Note : If you turn an object blue by, selecting then Left Clicking On the blue square bottom of your screen, it becomes a design object and is not engraved.
