

Engraving Using Disk Text

Disc Text is used as its name implies to engrave items like Dog Tags, Watch Backs, Medals etc.

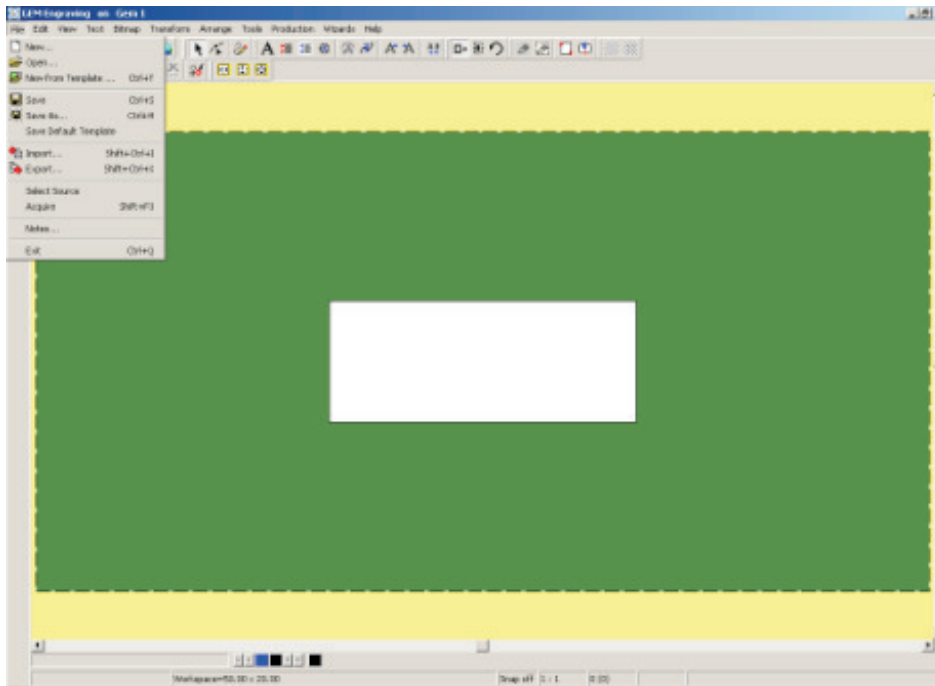


Figure 1

Left Click On "File", then Click On "New", see Figure 1.

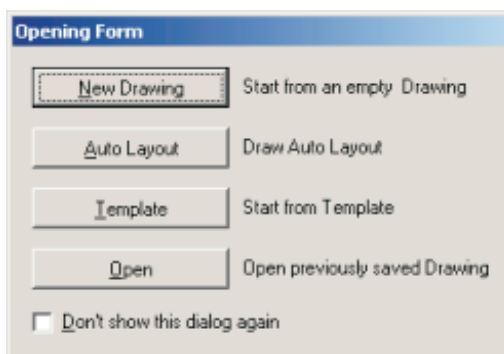


Figure 2

You will see the "Opening Form" Dialogue Box, Left Click On "New Drawing", see Figure 2.



Centre Vice Icon

Left Click On the "Centre Vice", then Click On "OK".

Quick Start Guide

Chapter 9 Disc Text

From the Main Menu Bar Left Click On "Text", then select "Disc Text", see Figure 3.

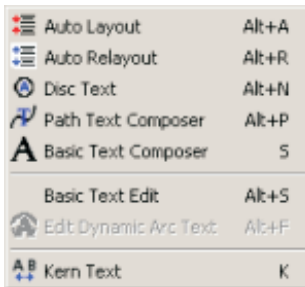


Figure 3

You will now see the "Disc Text" Dialogue Box. Enter your text in the Text Box provided, see Figure 4.

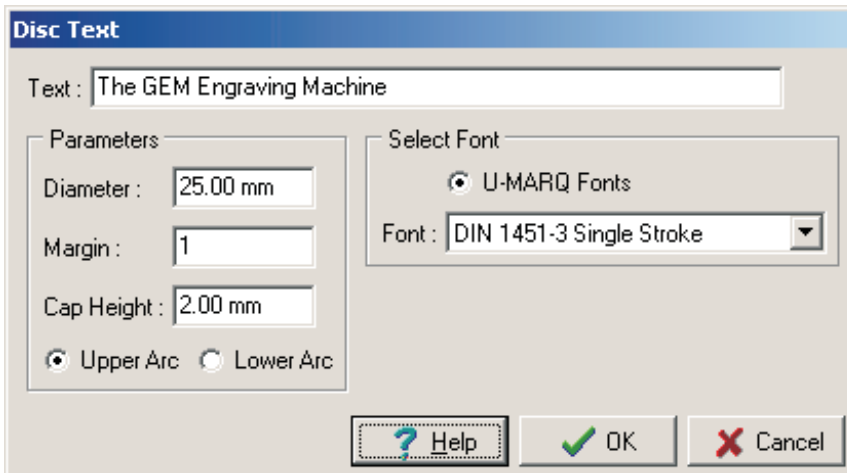


Figure 4

It is possible to change the Parameters for your Disc. Left Click On the relevant portion and enter the new data, see Figure 5.

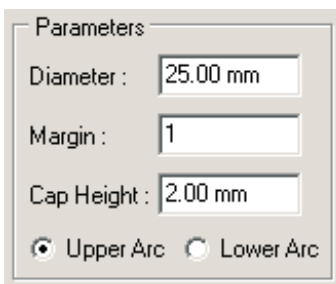


Figure 5

Diameter

Enter the diameter of your disc.

Margin

Enter any margin required between the text and edge of disc.

Cap Height

Enter the text height.

Arc

Choose whether you want to enter an Upper Arc or Lower Arc, by Checking the appropriate Box.

It is also possible to change your font style Left Click On the arrow and select your desired font. When satisfied with your set-up Click On "OK", see Figure 6.

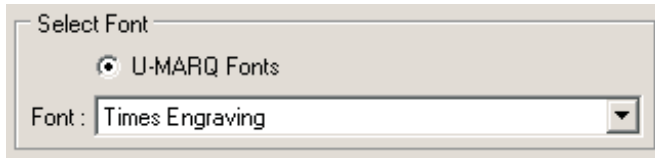


Figure 6

Your Disc Text layout will now be on the screen. The job in, Figure 7 has been setup using the Upper Arc setting. The job in, Figure 8 has been setup using the Upper Arc setting.



Figure 7



Figure 8

From the Main Menu Bar Left Click On "Production", then Click On "Quick Production".

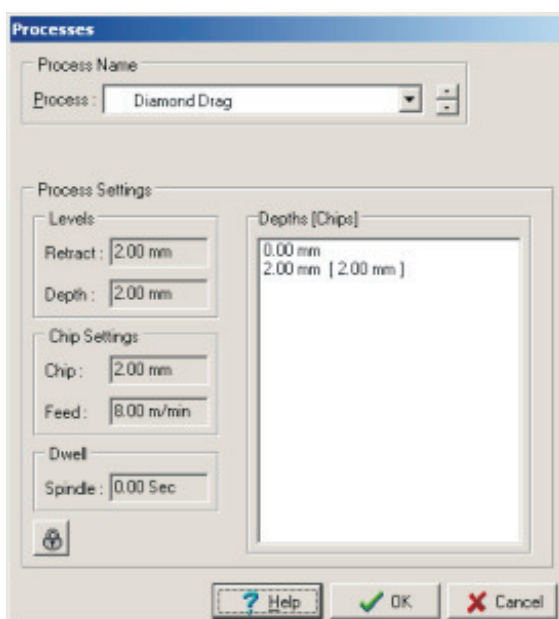


Figure 9

Quick Start Guide

Chapter 9 Disc Text

From the Processes Dialogue Box, choose the process relevant to the material being engraved. In this example select "Diamond Drag", then Left Click On "OK", see Figure 9.

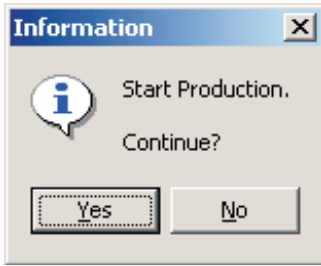


Figure 10

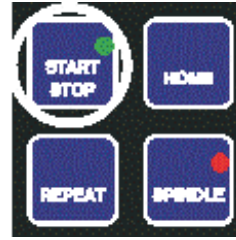


Figure 11

You now are asked if you wish to send your job to the GEM-FX Engraving Machine, Click On "Yes", see Figure 9.

You are now informed that the jobs has been processed by the GEM-FX Engraving Machine and is ready to engrave. Click On "OK".

On your GEM-FX Engraving Machine, you will now notice that the "Start / Stop" Button is lit, see Figure 11. This indicates that the job has been downloaded to the machine.

Screw the 'Light-touch' anti-clockwise into the top of the spindle shaft. **DO NOT OVER-TIGHTEN - hand tight only.**

Attach the Jigs to the Centre Vice Jaws on your GEM-FX Engraving Machine. Then place your Disc central in the Jig. Press "Start / Stop" on the keypad, see Figure 12. The GEM-FX Engraving Machine will start to engrave.

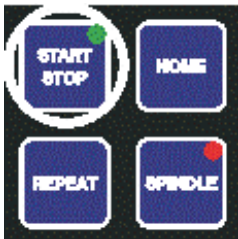


Figure 12

When the engraving has finished press "Home" on the Keypad.

Congratulations you have completed your first engraving using Disc Text.

Repeating the Job

To repeat a job on your GEM-FX Engraving Machine, is a simple process. Remove your already engraved item and replace with a new one. Press the "Start / Stop Button", then Press the "Repeat" Button so that the "Start / Stop" is lit by a green light. Press the "Start / Stop" Button, the machine will start to engrave. All parameters will remain exactly the same, as the original job that was sent down.

A useful point to note, is that you can re-engrave over the same item using this function, if doing so do not remove the object form the vice. It is possible for you to Repeat the Job after pressing "Home", however you will need to reset the surface. This is done in exactly the same way as before using the "Z" Down Key on the Keyboard.

Producing Only Selected Item

It is possible to produce only a portions of an engraving, this is accomplished by Select the parts by Left Clicking On I., Then Left Clicking On "Production" on the Main Menu Bar, then Selecting "Produce Selected". Choose your processes as normal and send to the GEM-FX Engraving Machine, as if you where engraving the whole job

Note : If you turn an object blue by, selecting then Left Clicking On the blue square bottom of your screen, it becomes a design object and is not engraved.
