

Vismec Controller Software

Vismec is the software that runs the GEM-FX Engraving Machines Controller and sits in your System Tray. There are a few items that can be configured and they will be described here.

Tray icon

Vismec is activated automatically when the GEM-FX Engraving Software is launched and links the Machine Drivers to the Controller Hardware. The Vismec Tray icon has two modes, one when it is connected to the controller and one when it is not. These are shown below and are how they appear in your System Tray, which is located at the bottom right of your screen.



Vismec Tray icon when Connected



Vismec Tray icon when Disconnected

If you pass your mouse cursor over the Vismec Tray icon, it will tell you its present state and the driver that is loaded, i.e., GEM-FX Plus, Disconnected, this information can be very useful if you are having connection or driver

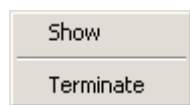


Figure 1

problems.

If you Right Click On the Vismec Tray icon which ever state it is in you will see the Dialogue Box as in Figure 1, select "Show", this will bring up the Dialogue Box shown in Figure 2, it is full of useful information.

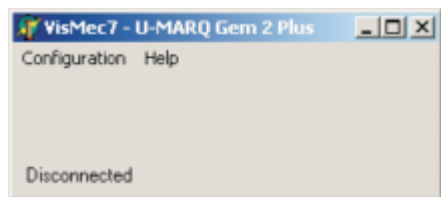


Figure 2

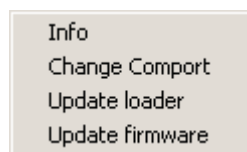


Figure 3

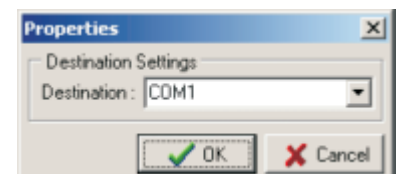


Figure 4

In the header you will see that the name of the version of Vismec is shown and the name of the loaded Driver. At the bottom it shows you the connection status, i.e. in this case Disconnected. Right. Click on "Configuration", you will see the Dialogue Box as in Figure 3. Click On "Info" this gives you some technical specifications on the Driver settings and speeds and is not of any real interest to the End User, but can be useful to a Support Engineer, who may request this information.

Change Com Port

Click On "Change Comport", this will bring up the Dialogue Box shown in Figure 5. If you Click On the "Arrow" on the right of the box, you will see a list of Serial Comms Ports that are fitted to your Computer. If you have fitted one of our recommended Easysync USB to Serial converters, this will show up as a normal Comms Port in the list.

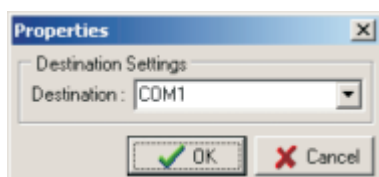


Figure 5

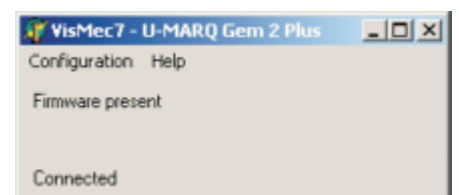


Figure 6

If you are having problems connecting your GEM-FX Engraving Machine to your Computer, this Dialogue Box is your first port of call. You can test to see which of the Comms Ports are connected to your GEM-FX Engraving Machine, by selecting one and Clicking On "OK" then waiting a few second to see if the Disconnected changes to

Quick Start Guide

Chapter 17 Vismec

Connected as in Figure 6, the Tray Icon should change to Connected and your GEM-FX Engraving Machine will go to its Home Position, if not there already. If this does not work on your first selection, try then next Port and use the same procedure until you find the correct one.

Update Loader

The Update Loader is a function that should only be used upon instruction by Technical Support.

Update Firmware

From time to time we issue Firmware Updates, these are used to fix bugs and enhance functionality. By Clicking On "Update Firmware" you will be asthmatically be directed to the Folder that contains the latest Firmware. This function should only be used upon the instruction of Technical Support, or using written instructions sent to you by Technical Support. Any other use of this function may render your GEM-FX Engraving Machine unusable.

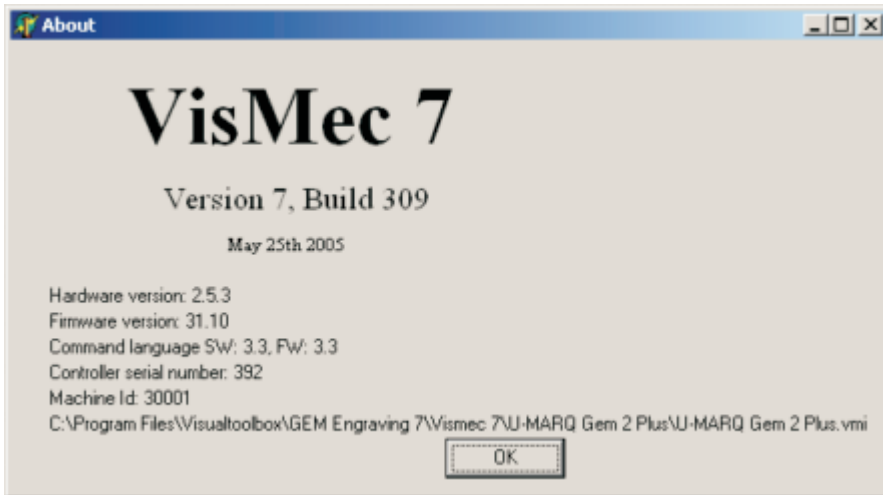


Figure 7

Help

Click On "Help" you will see two entries License, this should not be accessed unless ask for by Technical Support. Click On "About" this will bring up the Dialogue Box as in Figure 7, you may be asked when contacting Technical Support to access this to confirm your Machine Settings. This can be very useful in diagnosing problems and bringing them to a swift conclusion.

Note : If you accidentally shut Vismec down, the quickest way to re-start it is, from the GEM-FX Engraving Software, select Production from the Main Menu Bar, then Select Device and re-select the driver. Vismec should then re-launch and your GEM-FX Engraving Machine will Home, you can then use it as normal
