

## Altering Layouts

### Changing Font

If you want to change the Font Style of your text. Left Click On the line you wish to change. If you wish to change more than one line, draw a box around the multiple lines by holding the Left Mouse Button and Dragging, completely over the lines you wish to change. The selected lines will then go Dotty, see Figure 1.



Figure 1

Whilst the Text is Dotty (selected), navigate the Mouse Cursor over one of the lines of text and Click using the Right Mouse Button. You will now see a Dialogue Box, see Figure 2, select "Basic Text Edit".

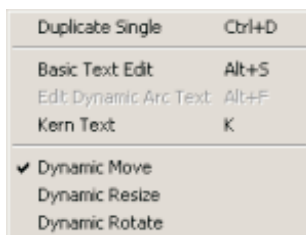


Figure 2

You will now see the Basic Text Edit Dialogue Box, see Figure 3.

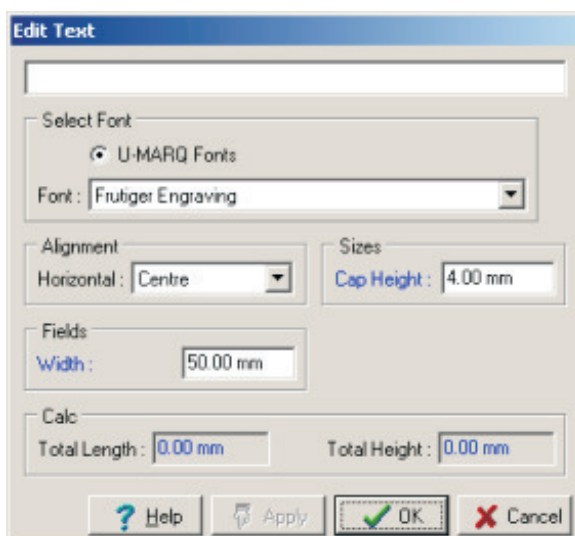


Figure 3

Left Click on the Font Box arrow and scroll through the fonts list, until you find the desired font. In this example we will change from Frutiger Engraving to Times Engraving, by Left Clicking on the Times Engraving, then Left Click On "OK", see Figure 4.

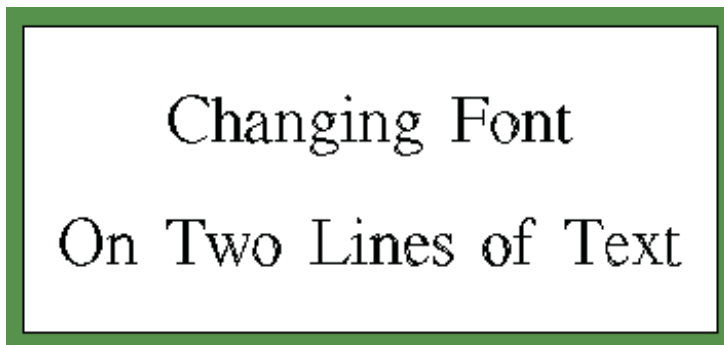


Figure 4



You will now see that the Font Style has changed, from Frutiger Engraving to Times Engraving, see Figure 4. An alternative method of changing the Font, is to select the Lines of Text as before so they go Dotty. Then from the Toolbar Left Click On the Scroll Fonts Icon, this will automatically scroll through the fonts one at a time and show them on the screen.

---

**Note :** You can Scroll through the Font List either forwards or backwards using the Scrolling Icons.

---

## Resizing Text or Logos

If you wish to re- size your text or image, it is very simple. To do this follow these easy steps, select the portion of your work that you wish to re-size. Do this by holding down the Left Mouse Button and Dragging a box around the relevant portion, they will go Dotty, see Figure 5.

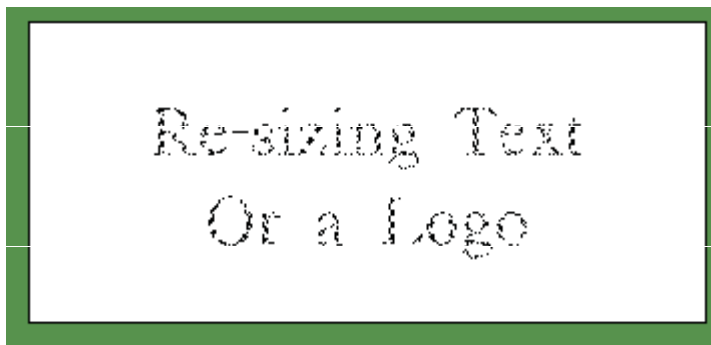


Figure 5

Left Click On the "Re-size" icon, this puts six Re-sizing Handles around the Text, see Figure 6.

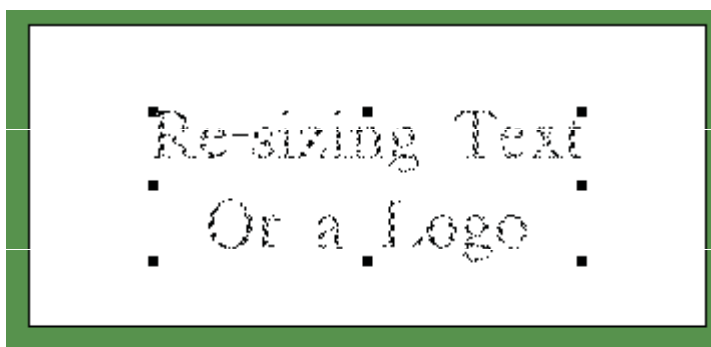


Figure 6



Left Click On one a Black Handle, located at one of the corners, hold down the Left Mouse Button and Drag Outward, this will scale the text to be bigger. You should notice this scales from the centre, see Figure 7.

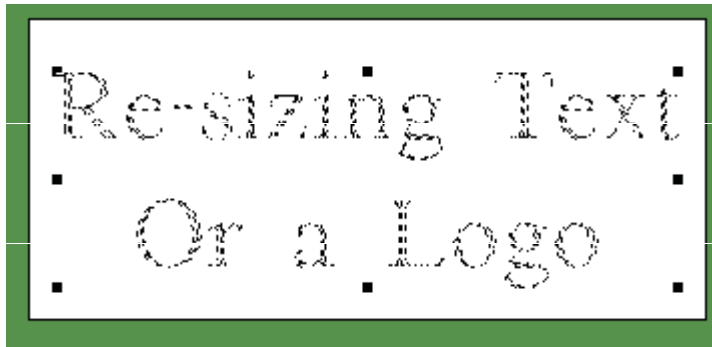


Figure 7

It is possible to Re-size portions separately, just select the text you wish to re-size, instead of the whole text.

**Note :** You can use the above method to re-size Logos as well as Text.

## Changing Line Spacing

If you wish to move lines closer or further apart, you can achieve this either Automatically or manually.

### The Automatic Method

In your GEM-FX Engraving Software there are many useful automated functions, Auto-Relayout is one of them.

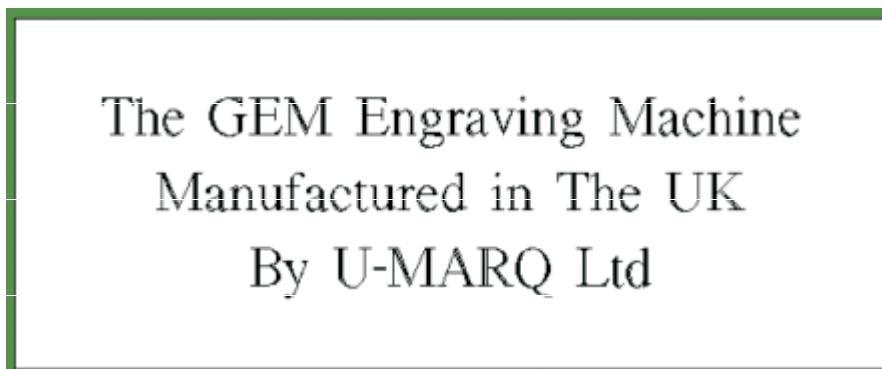


Figure 8

Using Auto Layout, create a plate similar to, Figure 8. Select all the Text so it goes Dotty, see Figure 9.

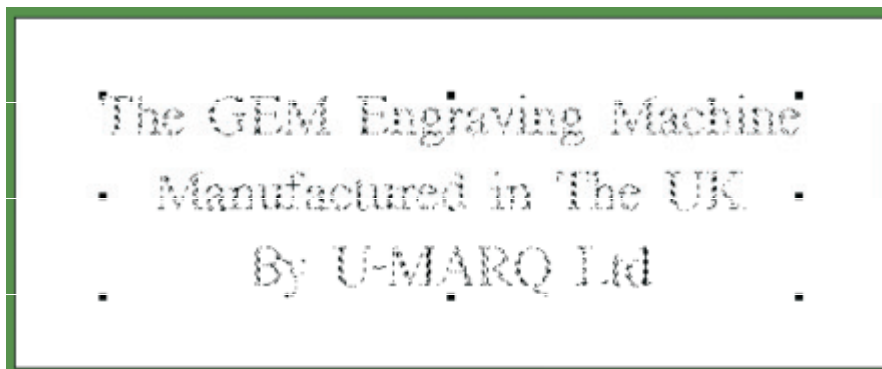


Figure 9

Select the Auto Re-Layout Icon from the Main Toolbar.

## Quick Start Guide

### Chapter 13 Altering Layouts

---

#### Auto Re-Layout Icon

You will get the Auto Re-Layout Dialogue Box, this gives you the option to change the Line Spacing on your plate, see Figure 10.

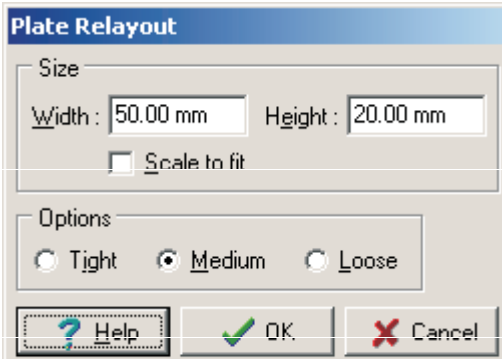


Figure 10

In the Option you will see you have three options Tight, Medium and Loose, these refer to the Line Spacing. You will notice one of these options is already Checked, this is the one that was applied when you constructed the plate, using the Auto Layout. If you now select Loose, then Click On "OK", you will see that the Line Spacing has opened out, see Figure 11.

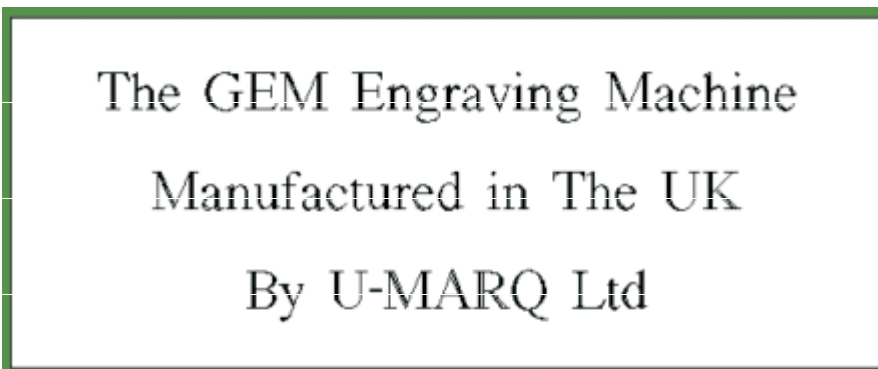


Figure 11

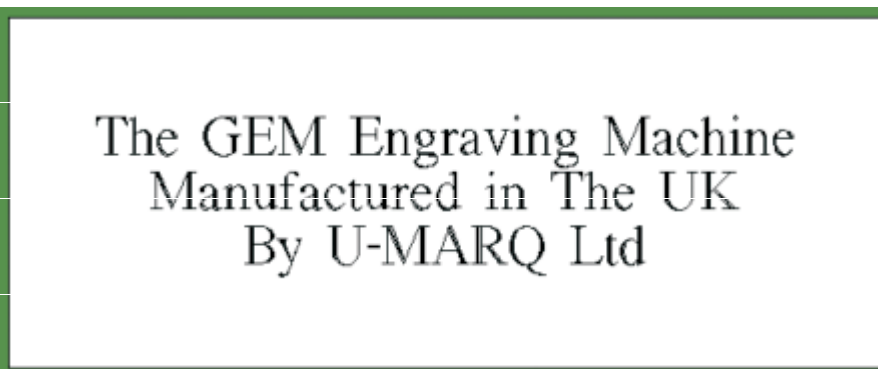


Figure 12

Now select Tight, then Click On "OK", you will see the Line Spacing will have decreased, see Figure 12.

## The Manual Method

If you wish to move lines closer or further apart, Left Click On the relevant line, this will then go Dotty, see Figure 13. Move the selected line by pressing one of the four Cursor Keys on your computers keyboard, as you press them you will see the line moving on your screen, see Figure 14.

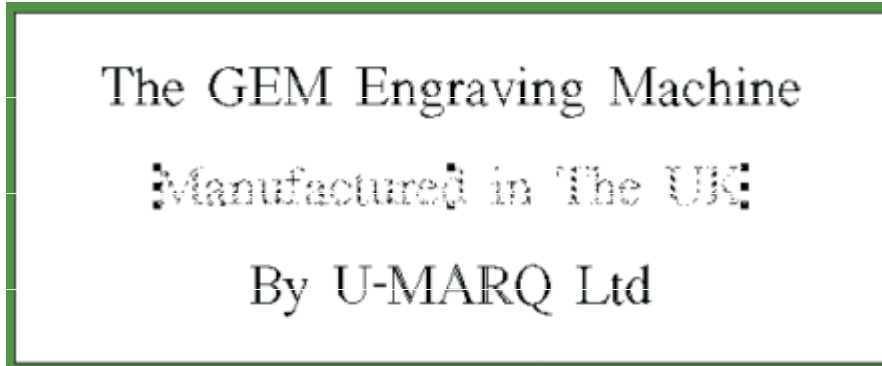


Figure 13

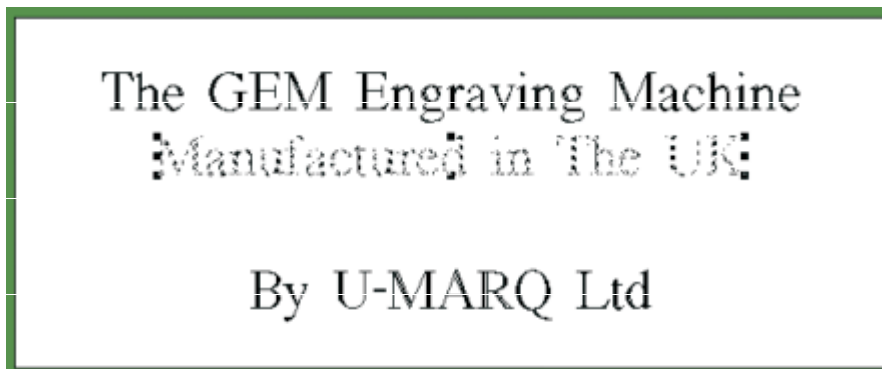


Figure 14

If you wish to you can move all objects on your plate in the same way. You are able to move objects Left, Right, Up or Down. Just by selecting then using the Cursor Keys.

## Changing Text

If you have made a mistake or wish to change the wording of your text, Left Click On the line of text you wish to change, this will go Dotty.

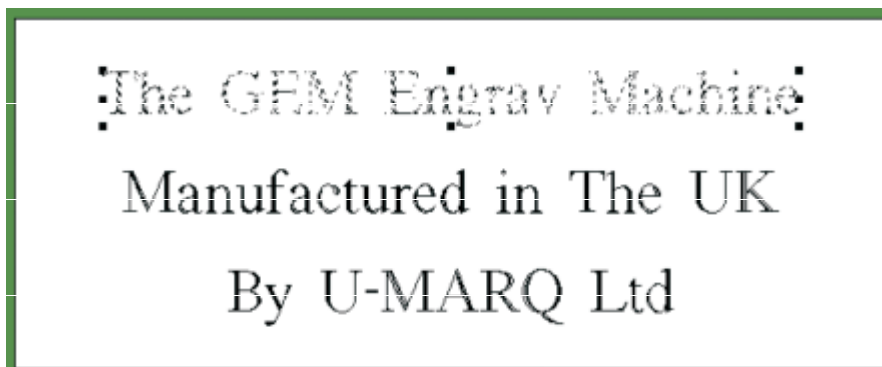


Figure 15

Right Click On the selected line (the Dotty one), you will then have a Dialogue Box select Basic Text Edit, see Figure 16. You will then be in the by now familiar Basic Text Editor, see Figure 17.

## Quick Start Guide

### Chapter 13 Altering Layouts

---

Duplicate Single	Ctrl+D
Basic Text Edit	Alt+S
Edit Dynamic Arc Text	Alt+F
Kern Text	K
Dynamic Move	
Dynamic Resize	
Dynamic Rotate	

Figure 16

You can now edit your text i.e. correct spelling or add letters or whole words. When you have finished Click On "OK".

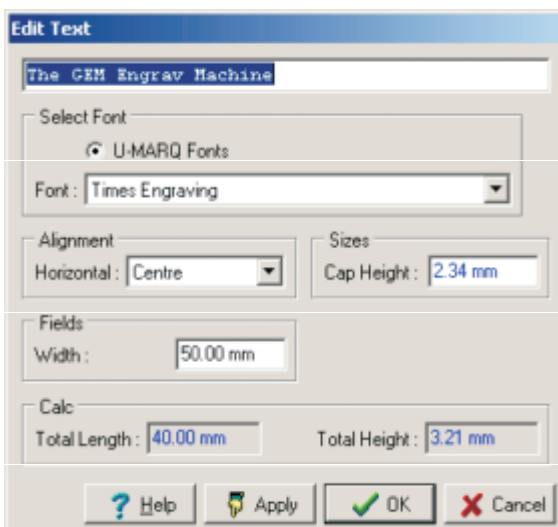


Figure 17

The Results should be something like Figure 18.

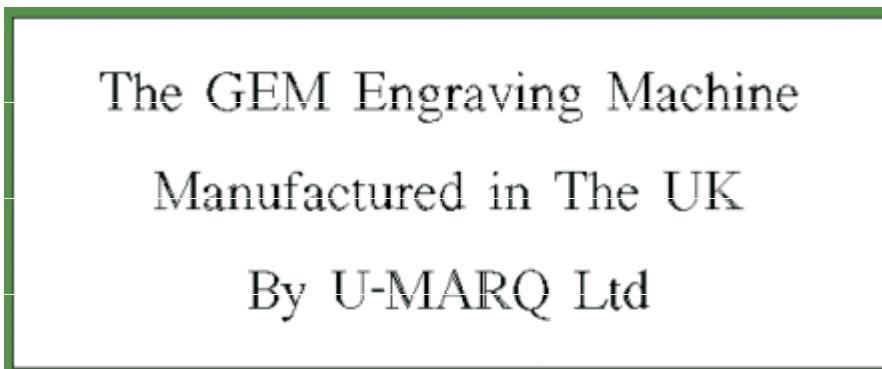


Figure 18

---

**Note :** You can only change the Text on one line at a time, using this method.

---