

How to install Release 8 on a computer with XP 32/64 Bit

To Download from the U-Marq Web Site

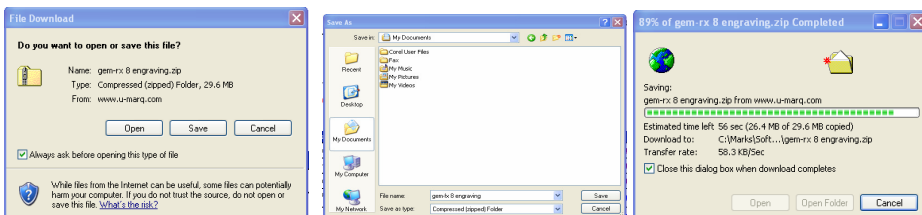
IMPORTANT PLEASE READ

Important remove the Dongle, USB-Serial adapter and all other USB devices before proceeding.
Do not uninstall your version 7 software, until you are sure your new release 8 software is fully working.

You will need to get new codes for your dongle these are obtainable by Faxing +44 (0)1908 623533 or e-mail support@u-marq.com with your original invoice, this must also include any extra software you may have purchased. Your U-MARQ Engraving software. Version 8 will not work without the new codes.

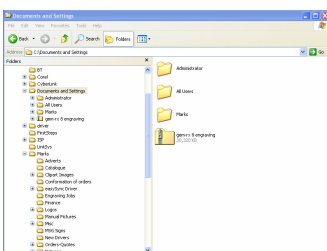
Go to www.u-marq.com, click support – click downloads – click on software – Click on downloads. Enter your login name and password, (If you have not registered then click on the click here to register link). Click on software downloads if you accept the U-MARQ software upgrade license agreement please click on I Agree, (at the bottom of the page).

Select the appropriate software by clicking on download i.e. – Gem RX Engraving release 8 build 1306 for windows XP, XP/64, Vista 32 & 64 bit.



Click on save. Choose a folder to save the download in and click save, the download will start, (download time approx 40 minutes).

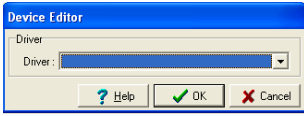
Once downloaded navigate through you file system to the folder where you saved the download, (you can use my computer or windows explorer to do this).



Double Left click on Gem-RX 8 engraving. Left click on extract files, the extraction wizard will open click next – click next – click finish.

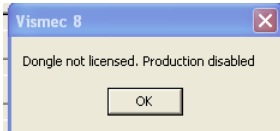
Double click on the set-up application icon – click on run, then follow the instructions on screen. Once you have click on finish, insert you dongle and USB-Serial converter, Double click on the GEM-RX engraving 8 icon on your desktop.

Welcome to Vistool in demo mode, Click OK.

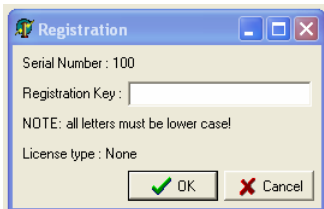


Click on the correct driver for your machine i.e., U-MARQ GEM RX4. If you are not sure which model you have, look at your original invoice or the serial plate on the back this will have the machine model number on it.

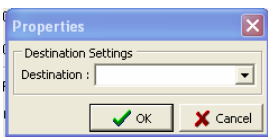
Click OK.



Click OK

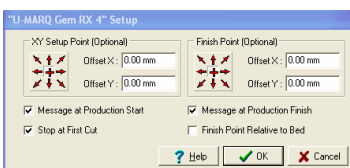


Type in your new Registration key code i.e., VM8 Serial:6880 Feature:1 Code:- +gyn pj* ywf% 84x9 Click OK.

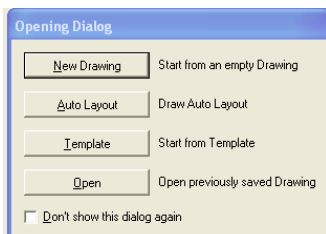


Click on the drop down arrow and select Com 4 (This is the default setting if you do not have a Com 4, see note at the end of the installation instructions).

Click OK.



Click OK.



Click on new drawing – click on Cancel, Click on Help – Registration

Type in your new code i.e., VT8 Serial:6880 Feature:13 Code:- a%94 pq9* awd% 6h99

Click OK.

(Vistool code accepted)

Click OK.

Click File and exit the software.

Restart the software.

The installation is now complete.

Please ensure that you turn off all power management and hibernate settings in Windows (see your Windows user manual). Leaving these on can effect the communications between the PC and controller in the Machine giving erratic behaviour.

Note: If the computer fails to communicate with the engraving machine. Please read Chapter 2 USB to serial Converter of your user manual, finding com port on windows XP.